

# **TOURISM, EQUALITIES, COMMUNITIES & CULTURE COMMITTEE ADDENDUM 1**

**4.00PM, THURSDAY, 25 NOVEMBER 2021**

**HOVE TOWN HALL - COUNCIL CHAMBER**

Agendas and minutes are published on the council's website [www.brighton-hove.gov.uk](http://www.brighton-hove.gov.uk). Agendas are available to view five working days prior to the meeting date.

Electronic agendas can also be accessed through our meetings app available through [ModernGov: iOS/Windows/Android](#)

This agenda and all accompanying reports are printed on recycled paper



# ADDENDUM 1

<b>ITEM</b>	<b>Page</b>
-------------	-------------

<b>38 PUBLIC INVOLVEMENT</b>	<b>5 - 6</b>
------------------------------	--------------

Public Questions

Mr C Hawtree – Hove Carnegie Library

Ms B Goulden – Mary Clarke Statue Appeal

<b>40 MEMBER INVOLVEMENT</b>	<b>7 - 8</b>
------------------------------	--------------

By reason of the special circumstances below, and in accordance with section 100b(4)(b) of the 1972 act, the chair of the meeting has been consulted and is of the opinion that this item should be considered at the meeting as a matter of urgency.

Note: reasons for urgency

The special circumstances for non-compliance with council procedure rule 3, access to information procedure rule 5 and section 100b(4) of the local government act 1972 (as amended), (items not considered unless the agenda is open to inspection at least five days in advance of the meeting) were that the 16 days of Action to end VAWG start on the TECC Committee Date (25 November 2021)

<b>41 DOMESTIC ABUSE ACT STRATEGY AND FUNDING AWARD OPTIONS</b>	<b>9 - 66</b>
---	---------------

Appendix 1

Appendix 2



**WRITTEN QUESTIONS**

The question will be answered without discussion. The person who asked the question may ask one relevant supplementary question, which shall be put and answered without discussion. The person to whom a question, or supplementary question, has been put may decline to answer it.

The following written questions have been received:

**1) Mr C Hawtree – Hove Carnegie Library**

Would the Chair please tell us when the stock at Hove's Carnegie Library will return to its previous level?

**2) Ms B Goulden – Mary Clarke Statue Appeal**

“We are child ambassadors for the Mary Clarke Statue Appeal. Mary was brave and gentle and died for women’s rights. Suffragettes at Mary’s funeral were told they should not be sad but take up her torch and light the darkness. We are taking up Mary’s lamp to try to make things better. We know you are discussing violence against women later on. We want you to stop girls being bullied or treated disrespectfully, especially at school. Will you make sure that by the time we are grown up, this city will be a safe place for women to live?”



**NOTICE OF MOTION**

**GREEN, LABOUR & CONSERVATIVE GROUPS**

**VIOLENCE AGAINST WOMEN AND GIRLS (VAWG)**

This council:

- re-commits itself, ahead of the 16 Days of Action to End VAWG to do all it can to end violence against women and girls, and support those affected
- notes that a draft council VAWG strategy will be brought to a future TECC for members to discuss – and the need to take into consideration the recent Fire & Rescue services report, to aid the council's strategy [1]
- acknowledges the work being done with council teams, voluntary groups, schools and other educational settings to address issues around healthy relationships, male privilege, toxic masculinity, hate crimes and consent, and vows to continue to do more, and to challenge misogynistic attitudes.

Requests that:

- the Chief Executive contacts PCC Katy Bourne, requesting a meeting with the CEO, lead councillors and CVS partners to discuss the emerging VAWG strategy, and urge strong actions on hate crime and misogyny;

Further, requests that the Chief Executive, using the necessary protocols, ensures that the council annually supports the UN 16 Days of VAWG Action through

- a minutes' silence for those killed; lighting public buildings orange and wearing orange ribbons, to align with the UN's commemoration;
- encouraging appropriate events and displays in public buildings, working with survivors' organisations and communities affected by violence and hate crime.

**Proposed by:** Cllr Powell

**Seconded by:** Cllr Grimshaw,  
Cllr Simpson

**Supporting Information**

[1] recent report by Her Majesty's Inspectorate of Constabulary and Fire & Rescue Services (HMICFRS), commissioned by the Home Secretary has identified an "epidemic" of violence against women, including those who identify as women and girls (VAWG) coupled with a national failure to give the issue the priority it deserves.

[2] Nottinghamshire and several other police forces across the UK have introduced their own misogyny hate crime policy. Where this has happened, there is evidence to suggest that it has helped women's confidence in the police and has sparked a changing culture within the force. On 5<sup>th</sup> October 2021, the PM ruled out prosecuting misogyny a hate crime, arguing that it would "overload the police and the justice system".

[3] a VAWG strategy will be coming to TECC committee in November 2021, and that once it is in place that it will be referred to the next Full Council for debate.







# **Pan-Sussex Strategy for Domestic Abuse Accommodation and Support 2021-2024**

DRAFT



## Table of contents

<b>Foreword</b> .....	<b>3</b>
<b>Introduction</b> .....	<b>4</b>
<b>Local authority areas</b> .....	<b>4</b>
<b>Understanding domestic abuse</b> .....	<b>7</b>
<b>Domestic Abuse Act 2021</b> .....	<b>10</b>
<b>Local authority duties</b> .....	<b>11</b>
<b>Funding</b> .....	<b>13</b>
<b>Needs assessment process</b> .....	<b>15</b>
<b>Strategic priorities</b> .....	<b>16</b>
<b>Summary of recommendations</b> .....	<b>17</b>
<b>Consistent and Collaborative</b> .....	<b>19</b>
<b>Diverse and Appropriate</b> .....	<b>22</b>
<b>Accessible and Inclusive</b> .....	<b>27</b>
<b>Responsive to Multiple Disadvantages</b> .....	<b>34</b>
<b>Victim-centred</b> .....	<b>38</b>
<b>Trauma-informed</b> .....	<b>41</b>
<b>What Sussex local authorities will do next</b> .....	<b>44</b>
<b>Closing statement</b> .....	<b>45</b>
<b>Local support services</b> .....	<b>46</b>
<b>Appendices</b> .....	<b>47</b>

Welcome to the first Pan-Sussex Strategy for Domestic Abuse Accommodation and Support. This Strategy has been created in partnership, to recognise the impact of domestic abuse and the need to provide safe accommodation and support for survivors and their children.

In the Domestic Abuse Act 2021, the government has committed to transforming the way we respond to domestic abuse. Under Part 4 of the new Act, Brighton & Hove City Council, East Sussex County Council and West Sussex County Council (known as Tier One authorities),<sup>1</sup> now have a legal duty to support victims of domestic abuse and their children living in refuges and other safe accommodation. Tier One authorities have been given funding for 2021-22 to enable them to meet this new requirement, along with an indication that further funding will follow.

Working with a range of key stakeholders, professionals, service providers and survivors, a Sussex-wide needs assessment was completed to assess the current provision and to help identify gaps and opportunities for improving the offer.

The purpose of this Strategy is to outline the findings of the needs assessment and provide an overview of the local authorities' commitments to improving access and increasing options for those in need of support. In Sussex, we will continue to assess and test established practice and look for opportunities to develop our understanding of ever-evolving needs, to be able to support our communities.

---

<sup>1</sup> [Understand how your council works - GOV.UK \(www.gov.uk\)](https://www.gov.uk/government/organisations/civil-service)

## Introduction

### Local authority areas

Local authorities like Brighton and Hove City Council, East and West Sussex County Councils are responsible for a range of services for people and businesses in their defined areas and are governed by councillors who are elected by the public in local elections.<sup>2</sup> Providing provisions for those affected by Domestic Abuse is one of those legal obligations.

Sussex, a largely rural area with over 150km of coastline, has a combined population of over 1.6 million<sup>3</sup>. West Sussex accounts for approximately 50% of the total population of the county, East Sussex 30% and Brighton and Hove 20%.<sup>4</sup>



### Brighton & Hove

- The population of Brighton was estimated to be 290,395 residents in 2017.
- Brighton & Hove is the 131st most deprived local authority in England (of 317).
- One in five people (19.5%) are from a Black or Minority Ethnic Group (14.5% South East, 20.2% England).
- Between 1,500 and 2,500 trans adults live in Brighton & Hove, with many more who visit to socialise, study and/or work.
- Our best estimate of lesbian, gay and bisexual residents is 11% to 15% of the population aged 16+.

### East Sussex

- The population of East Sussex was estimated to be 558,852 in mid 2020 (ONS mid-year estimates, 2020).
- East Sussex has a much older age profile compared to England and the South East.
- 91.7% of the county's population identified as White British, compared to the regional average of 85.2% and the national average of 80.5%

<sup>2</sup> [What is local government? | Local Government Association](#)

<sup>3</sup> [\[ARCHIVED CONTENT\] Census 2011 result shows increase in population of the South East - ONS \(nationalarchives.gov.uk\)](#)

<sup>4</sup> [Sussex-Peoples-Panel-Membership-Demographics-JAN-20-v2.pdf \(sussexhealthandcare.uk\)](#)

- 52% of the county's population was estimated to be female and 48% male, similar to the national split (2011 Census).
- Local projections suggest that by 2032 there will be over 130,000 people with a disability in East Sussex.

## West Sussex

- The population of West Sussex was estimated to be 858,852 in 2018.
- There is a roughly equal split between men (48.6%) and women (51.4%).
- Of the West Sussex population: 20.3% are aged 0-17 years, 56.9% are aged 18-64 years, 22.7% are aged 65+.
- 50-70% of the population live in rural areas, with 31% located in Horsham and Chichester.
- 84.5% of the population of West Sussex is White British. 3.3% were born in the UK but had an ethnic minority background.

### ❖ Strategy context

*"Whoever you are, wherever you live and whatever the abuse you face, you will have access to the services you need to be safe."<sup>5</sup>*

Whilst this Strategy has used the local needs assessment to assess how many people are affected by domestic abuse and the gaps in support in Sussex, it should be recognised that:

*"Evidence shows that the majority of those accommodated in refuges will be from out of area - for many survivors fleeing domestic abuse, their immediate safety from harm will be dependent on access to a safe, secret space outside of the local authority where they are usually resident. Local refuges need to be linked into a national network of provision, as well as being repositories of local knowledge and expertise."<sup>6</sup>*

In July 2021, the Domestic Abuse Commissioner started to map domestic abuse support services nationally. The information from this mapping, as well as the findings from each local authority area needs assessment like this one, will inform an understanding of service provision across England and will help government in its decision-making around future funding.

Participating in this national mapping exercise will enable Sussex to better understand and compare local needs with those victims/survivors fleeing and requiring support from outside of Sussex, so that ultimately there will be comprehensive provision of services across the whole of England and Wales.

---

<sup>5</sup> [Domestic abuse: PM vows to end 'postcode lottery' for victims - BBC News](#)

<sup>6</sup> Home Office. (2016). *Violence Against Women and Girls Services: Supporting Local Commissioning*. Available at: [VAWG commissioning toolkit \(publishing.service.gov.uk\)](https://publishing.service.gov.uk/government/uploads/system/uploads/attachment_data/file/541112/vawg-commissioning-toolkit.pdf), p.16.

The *Pan-Sussex Domestic Abuse Accommodation and Support Strategy 2021-2024* must also be considered as part of a wider context of domestic abuse work across the county. This Strategy has been informed by and builds upon previous strategies, consultations and reports developed by Tier One local authorities in Sussex, including:

- ❖ Pan-Sussex Strategic Framework for Domestic and Sexual Violence and Abuse.<sup>7</sup>
- ❖ The Safer West Sussex Partnership County Community Safety Agreement 2016–20.<sup>8</sup>
- ❖ Brighton & Hove Community Safety and Crime Reduction Strategy 2020-23.<sup>9</sup>
- ❖ Brighton & Hove Homelessness and Rough Sleeping Strategy 2020-2025.<sup>10</sup>
- ❖ East Sussex Safer Communities Partnerships Plan 2020/23.<sup>11</sup>
- ❖ Developing A Joint Domestic Violence and Abuse, Sexual Violence and Violence Against Women and Children Strategy for Brighton & Hove and East Sussex: A Consultation with Adult Victims/Survivors, Perpetrators and Professionals.<sup>12</sup>
- ❖ West and East Sussex District and Borough Councils Homelessness Strategies.

---

<sup>7</sup> East Sussex Community Safety Partnership. (2020). *East Sussex Safer Communities Partnerships Plan 2020/23*. Available at: [East Sussex Safer Communities Business Plan 2020 .pdf \(safeineastsussex.org.uk\)](https://www.safeineastsussex.org.uk).

<sup>8</sup> Safer West Sussex Partnership. (2020). *The Safer West Sussex Partnership: County Community Safety Agreement 2016 – 20*. Available at: [The Safer West Sussex Partnership](https://www.saferwestsussex.org.uk).

<sup>9</sup> Brighton & Hove Community Safety Partnership. (2020). *Community Safety and Crime Reduction Strategy 2020 – 2023*. Available at: [Brighton & Hove \(safeinthecity.info\)](https://www.brighton-hove.gov.uk).

<sup>10</sup> Brighton & Hove City Council. (2020). *Homelessness and Rough Sleeping Strategy 2020-2025*. Available at: [Homelessness and Rough Sleeping Strategy 2020-2025 \(brighton-hove.gov.uk\)](https://www.brighton-hove.gov.uk)

<sup>11</sup> East Sussex Community Safety Partnership. (2020). *East Sussex Safer Communities Partnerships Plan 2020/23*. Available at: [East Sussex Safer Communities Business Plan 2020 .pdf \(safeineastsussex.org.uk\)](https://www.safeineastsussex.org.uk)

<sup>12</sup> Against Violence and Abuse. (2018). *Developing A Joint Domestic Violence and Abuse, Sexual Violence and Violence Against Women and Children Strategy for Brighton & Hove and East Sussex: A Consultation with Adult Victims/Survivors, Perpetrators and Professionals*. London: Against Violence and Abuse.

## Understanding domestic abuse

"Anyone can be a victim of domestic abuse, regardless of gender, age, ethnicity, religion, socio-economic status, sexuality or background."<sup>13</sup>

The Government's definition of domestic violence is 'any incident or pattern of incidents of controlling, coercive, threatening behaviour, violence or abuse between those aged 16 or over who are, or have been, intimate partners or family members regardless of gender or sexuality.'

In addition to the above, following the introduction of the Domestic Abuse Act 2021, children that witness, hear or experience domestic abuse are also now recognised as victims in their own right for the first time.<sup>14</sup>

Abuse can take many forms such as:

- Physical or sexual abuse
- Violent or threatening behaviour
- Controlling or coercive behaviour
- Economic abuse
- Psychological, emotional, or other abuse
- Digital abuse

*42% of domestic violence victims/survivors have been victimised more than once. Victims/survivors experience an average of 20 incidents of domestic abuse in a year.<sup>15</sup>*

*Domestic abuse is rarely a one-off incident and it is the cumulative and interlinked types of abuse that have a particularly damaging effect on the victim.<sup>16</sup>*

### ❖ National picture

Between March 2019 and March 2020, an estimated 2.3 million adults living in the United Kingdom experienced domestic abuse and one in five children were identified as living with domestic abuse.<sup>17</sup>

Domestic abuse is however, a largely hidden crime that is under-reported to the police. The Crime Survey for England and Wales (CSEW) for 2017/18 found that only 17% of those who had experienced abuse in the last 12 months reported the abuse to the police.<sup>18</sup> Therefore, data held by the police can only provide a part of the picture of the actual levels of domestic abuse experienced.

Despite the under-reporting of domestic abuse incidents, the police in England and Wales receive over 100 calls every hour on average relating to domestic abuse.<sup>19</sup> Domestic

---

<sup>13</sup> [Domestic abuse: how to get help - GOV.UK \(www.gov.uk\)](https://www.gov.uk/government/urls/domestic-abuse-how-to-get-help)

<sup>14</sup> [Domestic Abuse Act 2021 \(legislation.gov.uk\)](https://legislation.gov.uk/ukpga/2021/32/section/1)

<sup>15</sup> Walby, S. (2004). *The cost of domestic violence*. Women and Equality Unit: University of Leeds. Available at: [Layout 1 \(lancs.ac.uk\)](https://lancs.ac.uk/research/units-and-centres/women-and-equality-unit/publications/the-cost-of-domestic-violence/)

<sup>16</sup> [Domestic abuse | The Crown Prosecution Service \(cps.gov.uk\)](https://www.cps.gov.uk/domestic-abuse)

<sup>17</sup> [About us - Domestic Abuse Commissioner](https://www.dac.gov.uk/about-us)

<sup>18</sup> [Domestic abuse prevalence and trends, England and Wales - Office for National Statistics \(ons.gov.uk\)](https://www.ons.gov.uk/people-in-work/employment-and-unemployment/domestic-abuse-prevalence-and-trends-england-and-wales)

<sup>19</sup> Her Majesty's Inspectorate of Constabulary (HMIC). (2015). *Increasingly everyone's business: A progress report on the police response to domestic abuse*. Available at: [increasingly-everyones-business-domestic-abuse-progress-report.pdf \(justiceinspectorates.gov.uk\)](https://www.justiceinspectorates.gov.uk/hmic/wp-content/uploads/2015/06/increasingly-everyones-business-domestic-abuse-progress-report.pdf), p.28.

abuse-related crime makes up 15% of all crime recorded by police in England and Wales and 35% of all recorded violence against the person crimes.<sup>20</sup>

*On average, victims at high risk of serious harm or murder live with domestic abuse for 2-3 years before getting help.<sup>21</sup>*

*85% of victims sought help from professionals an average of five times in the year before they got effective help to stop the abuse.<sup>22</sup>*

*Every day almost 30 women attempt suicide as a result of experiencing domestic abuse and every week three women take their own lives.<sup>23</sup>*

This Strategy must also recognise the impact Covid-19 had on domestic abuse and support services. During the pandemic, it was reported nationally that there was an increase in demand for domestic abuse support services. The National Domestic Abuse Helpline reported that between April and June 2020 there was a 65% increase in contacts logged, compared with the first three months of the year.<sup>24</sup> Similarly charities reported a 200% increase in calls and people accessing webchat services since the first lockdown.<sup>25</sup> We will explore in a later section whether this increase was encountered in Sussex.

---

<sup>20</sup> Her Majesty's Inspectorate of Constabulary and Fire and Rescue Services (HMICFRS). (2021). *Review of Policing Domestic Abuse During the Pandemic*. Available at: [Review of policing domestic abuse during the pandemic: 2021 \(justiceinspectorates.gov.uk\)](https://www.justiceinspectorates.gov.uk/review-of-policing-domestic-abuse-during-the-pandemic-2021/).

<sup>21</sup> [About domestic abuse | Safelives](#)

<sup>22</sup> [About domestic abuse | Safelives](#)

<sup>23</sup> Walby, 2004.

<sup>24</sup> [Domestic abuse in England and Wales overview - Office for National Statistics \(ons.gov.uk\)](https://www.ons.gov.uk/domestic-abuse-in-england-and-wales-overview)

<sup>25</sup> [Extra £40m to help victims during pandemic and beyond - GOV.UK \(www.gov.uk\)](https://www.gov.uk/government/news/extra-40m-to-help-victims-during-pandemic-and-beyond)



## ❖ Sussex picture

- An estimated 7% of women and 4% of men experienced at least one episode of domestic abuse in the last year (6% of population).<sup>26</sup> In Sussex this equates to 45,800 females and 21,800 males (67,600 adult victims in total).
- One in five children are identified as living with domestic abuse.<sup>27</sup> In Sussex, this equates to 60,000 0-15 year olds.
- 19% of estimated victims were known to Sussex Police in 2019.
- In 2020/21 Sussex Police recorded 20,800 domestic abuse crimes (18% of all recorded crime, 38% of all violence against the person). 13,700 victims were identified, 12,000 suspects and offenders.
- 28% of homicides in Sussex are flagged as domestic abuse.
- The rate of domestic abuse incidents and crimes per 1,000 population for Sussex (17) is lower than that for the South East (18) and England and Wales (23).<sup>28</sup>
- Sussex has the third highest arrest rate per 100 domestic abuse offences (50) in the country.<sup>29</sup>
- An estimated 5% of domestic abuse crimes in Sussex result in prosecution (4% conviction)
- In 2020/21 around 3,500 cases were heard at MARAC in Sussex.<sup>30</sup>
- Compared to 2019, in 2020 there was a 58% increase in ongoing support and a 24% increase in referrals to domestic abuse services funded by the Sussex Police and Crime Commissioner, highlighting the potential impact of Covid-19 in Sussex.

**Table 1: Number of victims per year based on ONS estimates and population**

	<b>Female 16-74</b>	<b>Male 16-74</b>	<b>Children 0-15</b>
Adur	1,688	782	2,377
Arun	4,227	1,939	5,213
Brighton & Hove	8,203	4,188	8,950
Chichester	3,195	1,471	4,023
Crawley	2,934	1,454	4,995
Eastbourne	2,683	1,279	3,553
Hastings	2,486	1,182	3,437
Horsham	3,860	1,810	5,271
Lewes	2,722	1,279	3,515
Mid Sussex	3,994	1,890	5,980
Rother	2,512	1,171	2,900
Wealden	4,336	1,990	5,528
Worthing	2,943	1,380	3,916

<sup>26</sup> [Domestic abuse victim characteristics, England and Wales - Office for National Statistics \(ons.gov.uk\)](https://www.ons.gov.uk/people-in-the-uk/domestic-abuse-and-violence-in-the-home)

<sup>27</sup> [Child abuse extent and nature, England and Wales - Office for National Statistics \(ons.gov.uk\)](https://www.ons.gov.uk/people-in-the-uk/child-abuse)

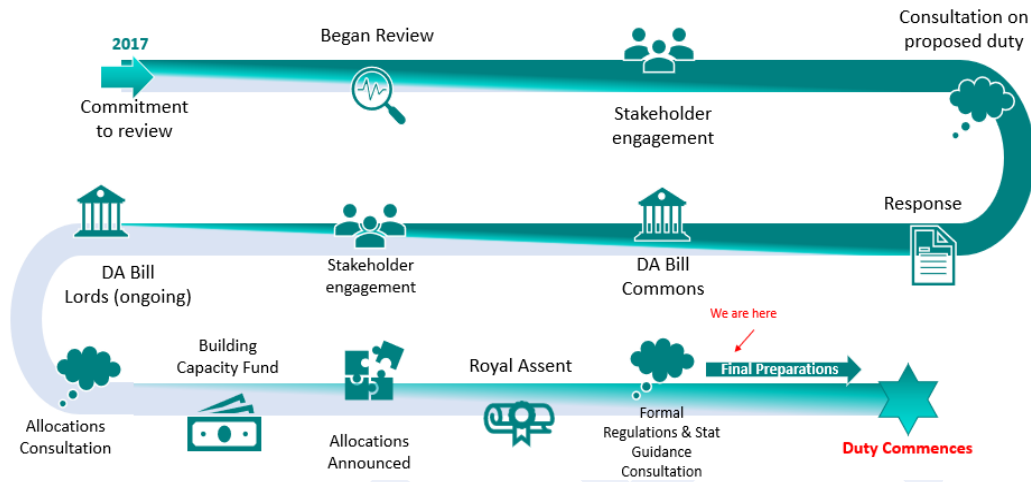
<sup>28</sup> [Domestic abuse victim characteristics, England and Wales - Office for National Statistics \(ons.gov.uk\)](https://www.ons.gov.uk/people-in-the-uk/domestic-abuse-and-violence-in-the-home)

<sup>29</sup> [Domestic abuse and the criminal justice system – Appendix tables - Office for National Statistics \(ons.gov.uk\)](https://www.ons.gov.uk/people-in-the-uk/domestic-abuse-and-violence-in-the-home)

<sup>30</sup> Multi-Agency Risk Assessment Conference: a regular safety planning meeting for high-risk victims/survivors of domestic abuse, including police, independent domestic violence advisers, adult and children's social services, health and other relevant agencies.

## Domestic Abuse Act 2021

The Domestic Abuse Bill was first introduced in the House of Commons in the 2017-19 parliamentary session. Following the 2019 General Election, the Government re-introduced the Bill on 3 March 2020 and it completed its parliamentary stages on 27 April 2021 and received Royal Assent, becoming law, on 29 April 2021.<sup>31</sup>



*"This landmark piece of legislation steps up the response to domestic abuse at every level – giving victims more support than ever before while ensuring perpetrators feel the full force of the law."<sup>32</sup>*

The Domestic Abuse Act has been designed to provide further protections to those who experience domestic abuse and strengthen measures to tackle perpetrators. Please see *Appendix 1* for a more detailed list of the measures introduced by the Domestic Abuse Act.

The following definitions of safe accommodation and support are included in the Act:<sup>33</sup>

**Refuge:** "a refuge offers single gender or single sex accommodation and domestic abuse support which is tied to that accommodation. The address will not be publicly available. Victims, including their children, will have access to a planned programme of therapeutic and practical support from staff. Accommodation may be in shared or self-contained housing, but in both cases the service will enable peer support from other refuge residents."

**Specialist safe accommodation:** "specialist safe accommodation offering single gender or single sex accommodation, alongside dedicated domestic abuse support which is tailored to also support those who share particular protected characteristic(s) and/or who share one or more vulnerabilities requiring additional support. Accommodation may be in shared or self-contained housing, and the address will not be publicly available."

**Dispersed accommodation:** "safe (secure and dedicated to supporting victims of domestic abuse), self-contained accommodation with the same level of specialist domestic abuse support as provided within a refuge but which may be more suitable for victims who

<sup>31</sup> [Domestic Abuse Act 2021 \(legislation.gov.uk\)](https://legislation.gov.uk)

<sup>32</sup> Lord Chancellor Robert Buckland, [Landmark Domestic Abuse Bill receives Royal Assent - GOV.UK \(www.gov.uk\)](https://www.gov.uk)

<sup>33</sup> [Delivery of support to victims of domestic abuse in domestic abuse safe accommodation services - GOV.UK \(www.gov.uk\)](https://www.gov.uk)

are unable to stay in a refuge with communal spaces or for victims who may not require the intensive support offered through refuge but are still at risk of abuse from their perpetrator.”

**Sanctuary Scheme:** “a survivor-centred initiative which aims to make it possible for victims of domestic abuse to remain in their own homes, where it is safe for them to do so, where it is their choice, and where the perpetrator does not live in the accommodation.”

**Support:** “the expert help provided to victims by the specialist staff in domestic abuse safe accommodation support services ... some support is directly provided by staff on site (e.g. within refuges), whereas other support will be provided to victims through a support worker visiting them, including in their own homes in the case of a sanctuary scheme. However, in all cases, support is provided to victims who reside in relevant safe accommodation.”

### Local authority duties

The primary duties that relate to this Strategy are highlighted below:

#### **PART 4** Local authority support

#### **Section 57 Support provided by local authorities to victims of domestic abuse**

*(1) Each relevant local authority in England must -*

***(a) assess, or make arrangements for the assessment of, the need for accommodation-based support in its area***

✓ **(a)** Using a proportion of the capacity funding provided by the government, Brighton & Hove, East and West Sussex County Councils commissioned a project team to complete a Sussex-wide needs assessment of accommodation-based support.

***(b) prepare and publish a strategy for the provision of such support in its area***

✓ **(b)** In consultation with the Pan-Sussex Domestic Abuse Partnership Board and over 70 key stakeholders, a project team prepared this Strategy to provide an overview of the needs assessment findings and make recommendations for commissioning new and additional services to improve access to support in safe accommodation for anyone experiencing domestic abuse.

***(c) monitor and evaluate the effectiveness of the strategy***

✓ **(c)** At a minimum, Brighton & Hove City Council, East and West Sussex County Councils will report on the progress of implementation on an annual basis and a needs assessments refresher will be conducted every three years.

#### **58 Domestic Abuse Local Partnership Boards**

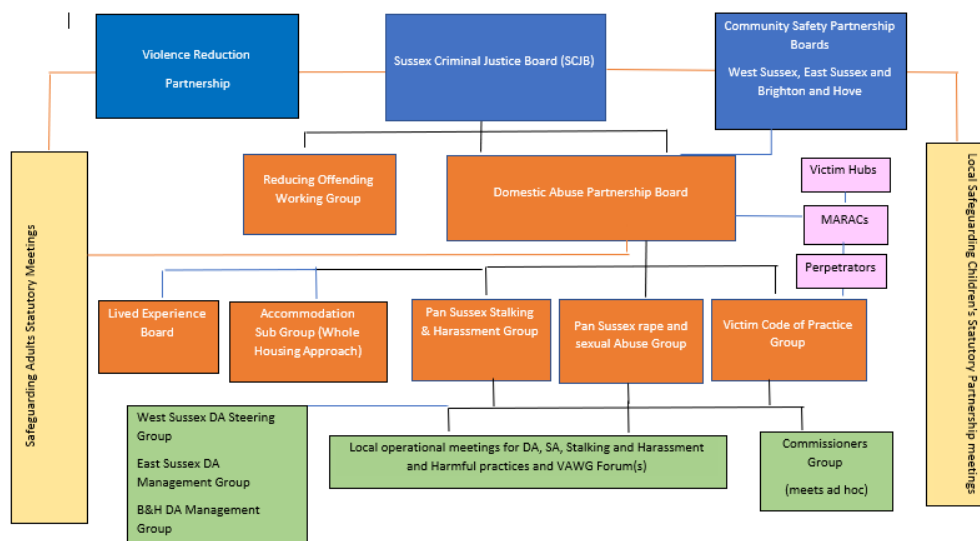
*(1) A relevant local authority in England must appoint a domestic abuse local partnership board for the purposes of providing advice to the authority about—*

*(a) the exercise of the authority’s functions under section 57, and*

(b) the provision of other local authority support in the authority's area.

✓ In Sussex, the three Tier One local authorities agreed to establish a Pan-Sussex Domestic Abuse Local Partnership Board with an independent Chair, which is currently meeting on a monthly basis and in future, will meet on a quarterly basis. Please see *Appendix 2* for details of the objectives, role and membership of Local Partnership Boards.

Diagram of how the Partnership Board fits into the existing governance frameworks in Sussex



**59 Annual reports**

(1) *As soon as reasonably practicable after the end of each financial year, a relevant local authority in England must submit to the Secretary of State an annual report in relation to the exercise of the authority's functions under this Part during the year.*

✓ The intention of the annual report is for authorities to provide assurance to central Government that they have been monitoring and evaluating their compliance with the new duty and that they are addressing the needs of victims and survivors identified in the needs assessment. This will be managed by the Domestic Abuse Partnership Board.

## Funding

To assist with the implementation of the new Local Authority duties, the following funding has been provided:

### 1. Domestic Abuse Capacity Fund

In October 2020, a £6 million Domestic Abuse Capacity Building Fund was announced as part of a series of steps the government took to ensure local authorities could prepare for the duty proposed under the Domestic Abuse Bill. The funding was to help local authorities undertake early planning and preparation work ahead of implementation of the new duty.

The fund was allocated equally across Tier One local authorities in England. This meant that East Sussex, West Sussex and Brighton & Hove Councils all received £50,000 each.<sup>34</sup> A proportion of this money was utilised by employing an independent project team to complete the needs assessment and draft this implementation Strategy on behalf of Sussex.

### 2. New Burdens Funding

In February 2021, it was announced that following the outcome of the Spending Review, £125 million 'new burdens funding' would be allocated to local authorities to cover the costs of meeting the new duty for the provision of support within domestic abuse safe accommodation services for 2021-22.<sup>35</sup> The additional funding is intended to help ensure that victims and their children are able to access lifesaving support in safe accommodation.<sup>36</sup> Local authorities must not divert funding from existing community based-services in order to meet their duty to provide support in safe accommodation.

Under Part 4 of the new duty there is also an obligation on Tier two, District and Borough Councils to cooperate with the Tier One authorities "so far as is reasonably practicable"<sup>37</sup> and so funding has been provided to support their ability to contribute to this process.

Although the below table reflects the funding allocations Sussex authorities have been given for 2020-21, the government has committed to giving funding beyond this period and the amount subject to the government's Spending Review.

---

<sup>34</sup> [Domestic abuse capacity building fund for local authorities - GOV.UK \(www.gov.uk\)](https://www.gov.uk)

<sup>35</sup> [Funding allocation methods: new domestic abuse duty - GOV.UK \(www.gov.uk\)](https://www.gov.uk)

<sup>36</sup> [£125 million allocated to councils to support domestic abuse victims and their children - GOV.UK \(www.gov.uk\)](https://www.gov.uk)

<sup>37</sup> [Draft statutory guidance \(publishing.service.gov.uk\)](https://publishing.service.gov.uk)

The breadth and number of recommendations made in this strategy therefore reflect this longer term funding commitment and the delivery of all of them is not intended to be achieved with the only the first year of funding that has been provided.

**Table 2: Sussex new burdens funding breakdown**

	<b>Local Authority</b>	<b>Domestic Abuse Duty 2021/22 allocation</b>
<b>Tier One</b>	Brighton & Hove	£606,288
	East Sussex	£1,069,272
	West Sussex	£1,498,174
<b>Tier Two</b>	Adur	£32,529
	Arun	£32,105
	Chichester	£34,060
	Crawley	£35,672
	Eastbourne	£32,736
	Hastings	£31,843
	Horsham	£34,005
	Lewes	£32,839
	Mid Sussex	£33,632
	Rother	£32,450
	Wealden	£32,355
	Worthing	£32,749

## Needs assessment process

This Strategy was written by a commissioning project team at the Office of The Sussex Police and Crime Commissioner (OSPC) working on behalf of the Tier One local authorities in Sussex: Brighton & Hove City Council, East Sussex County Council and West Sussex County Council. The project team consisted of a Project Manager and two Programme Support Officers.

### ❖ Focus and approach

A needs assessment was completed individually for each Tier One local authority area in Sussex to assess the needs of domestic abuse victims/survivors and demand for services. The needs assessment used the template provided by the Department for Levelling Up, Housing and Communities (DLUHC), collecting and evaluating data from a wide range of sources. To effectively understand the current provision, needs and demands, a mixed method approach was used, including both data and interviews with practitioners working in front-line services and with people with lived experience of domestic abuse.

### ❖ Data timeframes and sources

Data was collected from several sources to inform the needs assessment. Please see *Appendix 3* for a list of the data sources used and stakeholders engaged with.

To gain a comprehensive understanding of need and reduce the influence of Covid-19 on true data, where possible the last three financial years (2018/19 2019/20 and 2020/21) were included and assessed. However, due to resource issues or the way the data is held, it was not always possible to secure this information.

Multi-agency analysis was a challenge when comparing information from multiple services, all operating different case management systems and reporting requirements. Referral information was also often contained within individual case files and not easy to get through the case management systems. In some cases therefore some of the information included is the result of dip sampling rather than viewing every single case file.

Wide stakeholder feedback was gathered to address the numerical data gaps. The information in this Strategy should therefore be viewed as only part of the picture with some areas still unknown.

The needs assessment process highlighted that greater consistency in gathering and recording data is required in order to better inform future needs assessments, ultimately providing a stronger evidence base for the commissioning of accommodation and support provision across Sussex.

## Strategic priorities

The findings of the needs assessment shaped six strategic priorities to ensure that Sussex will improve provisions for victims/survivors of domestic abuse.

### **1.Consistent and Collaborative**

2.Promoting multi-agency and partnership commissioning and working to ensure a consistent offer across Sussex

### **1.Diverse and Appropriate**

2.Providing a wide range of appropriate safe accommodation and support options

### **1.Accessible and Inclusive**

2.Ensuring services are accessible to all victims/survivors and meet the specific needs of those with the full range of protected characteristics

### **1.Responsive to Multiple Disadvantages**

2.Establishing specialist provision to support victim/survivors with Multiple Complex Needs

### **1.Victim-centred**

2.Empowering victims/survivors to remain in their own homes through choices

### **1.Trauma-informed**

2.Embedding trauma-informed practice in services and processes through training and specialist knowledge



## Summary of recommendations

The recommendations made throughout the Strategy have been summarised below. The delivery of these recommendations will be subject to the ongoing availability of New Burdens Funding.

### Consistent and Collaborative:

- ▶ Inconsistencies and gaps in service provision across Sussex should be addressed in accordance with local demand and needs.
- ▶ The consistency and quality of data collection must be improved across all services by establishing clear reporting requirements, unique client identifiers and pragmatic data sharing agreements.
- ▶ Housing Teams must be regularly represented at MARAC, alongside other relevant organisations.
- ▶ Sussex local authorities should promote collaboration in the development of procedures and service models, including move-on pathways and co-located IDVAs. Wherever practical, Sussex authorities should jointly commission domestic abuse safe accommodation and support, to ensure consistency and value for money.
- ▶ Victims/survivors must be able to actively participate in the design and commissioning of domestic abuse safe accommodation and support services.

### Diverse and Appropriate:

- ▶ Sussex local authorities should provide more domestic abuse accommodation spaces for women and their children, according to the Council of Europe's minimum standards.
- ▶ A broader menu of domestic abuse safe accommodation options, in line with a Whole Housing Approach, should be developed in Sussex. Consideration should be given to ensuring all new accommodation options are appropriate and quality assured.

### Accessible and Inclusive:

- ▶ Sussex local authorities should ensure that every available form of domestic abuse safe accommodation offers dedicated, personalised and holistic support for children and young people. All relevant safe accommodation options will be suitable and appropriate for children.
- ▶ Specialist safe accommodation and support for victims/survivors aged 16-25 should be established and be culturally appropriate for anyone fleeing forced marriage and so-called honour-based violence, including couples accommodation where needed.
- ▶ Offers of support should be tailored more directly to older people across Sussex, including more generic language, broader promotion of support, linking in with other support services and targeted training for front-line professionals who routinely come into contact with older people.
- ▶ All women in safe accommodation in Sussex should receive a minimum standard of care and support, to include keywork and move-on support.
- ▶ Sussex local authorities will explore options for the provision of specialist, dispersed and self-contained units of safe accommodation that can accommodate male victims/survivors of domestic abuse.
- ▶ Sussex local authorities should increase specialist floating support and dispersed and self-contained units of safe accommodation that can accommodate LGBTQ+ victims/survivors and invest in LGBTQ+ awareness training for frontline practitioners.

- ▶ Support and accessibility for disabled victims/survivors in safe accommodation should be improved, by introducing multi-agency in-reach teams where needed, developing new facilities or adapting existing facilities, with measures such as installing ramps, increasing ground-floor and step-free units and installing visual fire alarms to assist deaf people.
- ▶ Housing application processes should be in-person and accessible for those with SEND or SLCN and include interpretation for a range of languages, including British Sign Language.
- ▶ Sussex local authorities will investigate specialist safe accommodation options for victims/survivors from marginalised ethnic groups, including Black and minoritised ethnic groups, Gypsy, Roma and Traveller communities and those with No Recourse to Public Funds.
- ▶ Cultural awareness and immigration rights awareness training should be increased for frontline staff and commissioners to better understand the needs of various marginalised groups, including those with No Recourse to Public Funds and Gypsy, Roma and Traveller communities. Training packages must acknowledge the intersection of race, class and gender.

#### **Responsive to Multiple Disadvantages:**

- ▶ Sussex local authorities, specialist domestic abuse accommodation providers and support services should holistically support victims/survivors with MCN and ensure accessibility of services by providing both remote and in-person assessments and support.
- ▶ Accommodation and support options appropriate for the needs of domestic abuse victims/survivors with MCN will be explored, including short-term respite facilities, specialist housing, 'move on' pathways and in-reach/floating support.

#### **Victim-centred:**

- ▶ Victims/survivors should be able to remain in their home if they choose to, and it is safe to do so, by introducing measures such as Sanctuary Schemes throughout the county.
- ▶ Sussex local authorities will explore options for the re-housing of perpetrators and enforcement of loss of tenancies, alongside promoting domestic abuse perpetrator behavioural programmes.
- ▶ 'Whole Family' intervention and support should be promoted and further invested in throughout Sussex.

#### **Trauma-informed:**

- ▶ Consistent trauma-informed practice training should be developed for district and borough housing teams, housing associations and registered social landlords, expanding on existing training packages.
- ▶ Each local authority area will explore the potential of a single point of contact approach for victims/survivors accessing different services.
- ▶ Sussex local authorities will consider co-locating housing specialists at domestic abuse safe accommodation and support, where needed.

## Consistent and Collaborative

Promoting multi-agency and partnership commissioning and working to ensure a consistent offer across Sussex

The need for improved consistency in service offers, approaches and data collection across the county, as well as the benefits of multi-agency collaboration were common themes discussed by stakeholders. Creating a more consistent offer of services across England and Wales is also a key priority of the Domestic Abuse Commissioner, Nicole Jacobs:

*"The (DA) Act sets out my legal powers which I will use to support all victims across England and Wales by first tackling the 'postcode lottery' of services."<sup>38</sup>*

The key inconsistencies and gaps identified throughout Sussex are summarised in the table below and will be discussed in more detail throughout the Strategy.

**Table 3: Inconsistencies and Gaps in Sussex**

Service Provision	Inconsistency/Gap	Local Authority Area
Refuge	Refuge considering referrals from survivors with Multiple Complex Needs	West Sussex
	Refuge with disability support, including wheelchair access and equipment for deaf survivors	Pan-Sussex
	Refuge considering referrals from survivors with No Recourse to Public Funds	West Sussex
	Refuge considering referrals from transgender survivors	East and West Sussex
	Refuge accommodating larger families	Pan-Sussex
Specialist accommodation	LGBTQ+ specialist accommodation	East and West Sussex
	Male domestic abuse specialist accommodation	Pan-Sussex
	Specialist accommodation for survivors with Multiple Complex Needs	Pan-Sussex
	Specialist accommodation for survivors from minoritised ethnic groups	Pan-Sussex
Other accommodation options	Dispersed/Self-contained accommodation	Pan-Sussex
	Sanctuary Scheme	Brighton & Hove
	Short-term respite accommodation	West Sussex and Brighton & Hove
	Appropriate move-on accommodation	Pan-Sussex
	Perpetrator accommodation	Pan-Sussex
Support	Floating support	Pan-Sussex
	Children and young person specialist worker	East Sussex
	Whole family intervention	East Sussex and Brighton & Hove
	Availability of in-person assessments for housing and support services	Pan-Sussex
	Availability of interpreters and British Sign Language easily available for housing and support services	Pan-Sussex
Training	Trauma-informed approach training	Pan-Sussex
	Awareness training on marginalised groups, including No Recourse to Public Funds	Pan-Sussex

<sup>38</sup> [Landmark Domestic Abuse Bill receives Royal Assent - GOV.UK \(www.gov.uk\)](https://www.gov.uk/government/news/landmark-domestic-abuse-bill-receives-royal-assent)

► **Inconsistencies and gaps in service provision across Sussex should be addressed in accordance with local demand and needs.**

The needs assessment highlighted inconsistency in case management systems and data collection. At least six different case management systems are currently in use across Sussex. This made it challenging to easily compare and fully understand service provision and demand in Sussex. Data on referrals was often contained in individual case files which needed a manual check. There was also a lack of available data relating to domestic abuse from health partners.

To improve future needs assessments and provide a stronger evidence base, more standardisation in data collection is required. Establishing clear reporting requirements, introducing unique client identifiers and developing information sharing agreements would assist in both improving consistency and monitoring victims/survivors as they move between services.

► **The consistency and quality of data collection must be improved across all services by establishing clear reporting requirements, unique client identifiers and pragmatic data sharing agreements.**

Stakeholder engagement reinforced the benefits of collaboration and partnership working in improving consistency and ensuring a holistic approach to supporting victims/survivors of domestic abuse. In Sussex, arrangements for the provision of domestic abuse and sexual violence services are currently managed in partnership by Brighton & Hove and East Sussex local authorities but co-commissioned with the Police & Crime Commissioner and Clinical Commissioning Group (CCG). West Sussex County Council commissions refuge services but does not commission a community service, as this is provided 'in house'. The Police and Crime Commissioner (PCC) commissions many services on a pan-Sussex as well as individual basis, including stalking and sexual violence service contracts. The joint delivery of this Strategy by the OSPCC, the Tier One and Tier Two authorities in East and West Sussex reflects the importance of partnership working for the benefit of victims/survivors across Sussex.

Partnership working and collaboration is seen operationally through the Multi-Agency Risk Assessment Conference (MARAC) held regularly by each Tier One local authority in Sussex.

*"The MARAC leads multi-agency safety planning for high-risk victims of domestic abuse. It brings together the police, independent domestic abuse advisers, children's social services, health, social landlords and other relevant agencies. They share information and write a safety plan for each victim and family, which may include actions by any agency present. The housing authority should be consistently represented at the MARAC and encourage relevant social landlords to also be represented."<sup>39</sup>*

Feedback indicated that in East Sussex, housing authority representatives do not regularly attend MARAC, although they do attend when cases known to them are discussed. In Brighton & Hove and West Sussex, housing representatives attend each MARAC for the whole duration of the meeting. To be consistent and ensure that expert housing advice is available when it is needed, housing officers should attend each MARAC.

► **Housing Teams must be regularly represented at MARAC, alongside other relevant organisations.**

Collaboration is also fundamental in the development of procedures and service models to ensure they are efficient, consistent and led by expertise. Specialist domestic abuse

---

<sup>39</sup> [Chapter 21: Domestic abuse - Homelessness code of guidance for local authorities - Guidance - GOV.UK \(www.gov.uk\)](https://www.gov.uk/guidance/chapter-21-domestic-abuse-homelessness-code-of-guidance-for-local-authorities)

services told us that the quality of response to domestic abuse is highly varied between housing teams across Sussex, with some areas creating artificial barriers for victims/survivors in accessing support. This finding highlights the need for collaboratively agreed and actioned processes or approaches, which will be supported by the creation of the Domestic Abuse Partnership Board.

One example of collaboration in Sussex is the development of a consistent and trauma-informed move-on procedure between East Sussex housing authorities and Refuge, which ensures the best outcomes for victims/survivors leaving Refuge. Sussex is also in the process of co-locating Independent Domestic Violence Advisors (IDVAs) at housing authorities to promote more collaboration. IDVAs and housing officers may still disagree about whether a victim/survivor should remain in area or move away, but overall, this measure would ensure dedicated domestic abuse knowledge is available during the housing application process.

In a bid to promote a more holistic approach, under Part 4 of the Domestic Abuse Act, Local authorities must also have regard to other related areas of work, such as community safety, safeguarding, housing and homelessness and Violence Against Women and Girls (VAWG), to name a few.

In Sussex, there have been several recent joint funding applications to promote the safety of and reduction in violence towards women and girls including the government's Changing Futures programme and Safer Streets Fund round 3. Please see *Appendix 4* for more information about these bids.

- ▶ **Sussex local authorities should promote collaboration in the development of procedures and service models, including move-on pathways and co-located IDVAs. Wherever practical, Sussex authorities should jointly commission domestic abuse safe accommodation and support, to ensure consistency and value for money.**

Partnership working and collaboration must include the voices of victims/survivors themselves, ensuring that their feedback and experiences are incorporated at all stages of service design, delivery, implementation and monitoring. Sussex local authorities are currently in the process of developing a joint Lived Experience Board to meaningfully engage with, and advise, the Pan-Sussex Domestic Abuse Partnership Board.

- ▶ **Victims/survivors must be able to actively participate in the design and commissioning of domestic abuse safe accommodation and support services.**

## Diverse and Appropriate

*Providing a wide range of appropriate safe accommodation and support options*

This strategic priority is informed by the demand on and current provision of safe accommodation in Sussex. These factors highlighted the need for a more diverse and appropriate range of safe accommodation and support options, a common finding throughout the needs assessment and stakeholder engagement.

### ❖ Demand in Sussex

Homelessness Case Level Information Collection (H-Clic) collects homelessness data and indicates the level of demand on local housing authorities. The following table, largely based on H-Clic submissions, shows the number of households owed either a prevention or relief duty where the reason for the loss of their last settled home was domestic abuse.<sup>40</sup> Where data is missing, figures for the whole year could not be obtained from the relevant council in the timeframes and so totals are likely to be higher than stated here. Data reporting must be improved to capture an accurate picture of demand on housing authorities for future refreshes of the needs assessment, as previously discussed.

**Table 4: Homelessness data for 2019-20 and 2020-21**

Local Authority	District/Borough	2019-20	2020-21
East Sussex	Eastbourne	53	-
	Hastings	104	120
	Lewes	24	-
	Rother	54	-
	Wealden	57	59
West Sussex	Adur	10	26
	Arun	33	49
	Chichester	17	-
	Crawley	49	83
	Horsham	26	12
	Mid Sussex	50	47
	Worthing	46	49
Brighton & Hove	Brighton & Hove	11	53
<b>Total</b>	<b>Sussex</b>	<b>534</b>	<b>498</b>

Another component of analysing service demand is looking at out-of-area referral numbers. Victims/survivors moving between areas is a common response to abuse. For example, over a 12-month period, 72% of refuge referrals where a postcode was provided were from out of area in East Sussex and 85% in West Sussex. This figure was 64% in Brighton & Hove for a three month period. Service providers and housing authorities also provided anecdotal evidence about people from other areas outside Sussex, approaching them for help with housing due to domestic abuse. With national and local evidence highlighting this common trend, Sussex must consider the demand of out-of-area referrals when commissioning future services.

<sup>40</sup> A prevention duty refers to individuals who are at risk of homelessness and a relief duty refers to those who are already homeless. If an individual is found to be owed either duty, that person is eligible for housing support from the local authority. Source: [Prevention and relief duties | Westminster City Council](#)

## ❖ Provision in Sussex

According to national refuge referral mechanism for women, Routes to Support (RtS), as of 1 September 2021, there were eight providers offering domestic abuse services in Sussex.<sup>41</sup> This figure refers to the biggest commissioned and non-commissioned services. There are many smaller organisations also working across Sussex - please see *Appendix 5* for a full service list. East Sussex refuge is currently provided by Refuge, the national safe accommodation provider. From 1<sup>st</sup> November 2021, the East Sussex refuge contract will be delivered by Clarion Housing Group.

Single sex, women's refuge is the principal safe accommodation option in Sussex, other than four specialist LGBTQ+ dispersed safe accommodation units in Brighton & Hove. The remit of refuge accommodation is to provide a safe place for a victim/survivor to receive emotional and practical support and to start their recovery. Interviews with survivors at a Sussex refuge suggested that staff can have a positive impact on a victim/survivor's recovery and that peer support is also a valuable component of having shared facilities.



### Case study

A refuge referral was received from London for a woman with two young children. Due to coercive control and emotional abuse from her husband, the woman had very low confidence in caring for her children.

Refuge staff worked to support the client in establishing routines and preparing meals. The children received dedicated support from the refuge's children's workers. Refuge staff supported the client with linking her up with other support services and to find school and nursery places for the children. The client attended the Freedom Programme.

The client and her children received specialist support and began to recover from abuse. The client grew in confidence in herself and in her abilities as a mother.

There are 90 refuge spaces in Sussex; 72 of these spaces (80.9%) are commissioned, 10 spaces (11.2%) are not commissioned, and data is unknown for seven spaces.<sup>42</sup> In West Sussex, all properties have shared facilities. One East Sussex refuge has a self-contained unit, the remaining four only have shared facilities. The Brighton & Hove refuge can accept teenage sons up to the age of 18. Current East Sussex refuge policy is to accept teenage sons up to 18 and Clarion Housing Group will also be contracted to do the same, when safe to do so. West Sussex refuges do not accept male children over the age of 12. The largest proportion of referrals to Sussex refuges were self-referrals: 60% in Brighton & Hove, 40% in East Sussex and 34% in West Sussex.

The Council of Europe (CoE) recommends that there is at least one specialist violence against women shelter in every region and one family place (victim/survivor and their children) per 10,000 of the local population.<sup>43</sup> The CoE advises that these spaces may be dispersed and must be able to support those with additional needs. For Sussex as a whole, an estimated 171 spaces for women and their children are needed to safely fulfil this standard. The breakdown of current and target totals of refuge spaces are provided in the following table.

<sup>41</sup> Women's Aid. (2021a). *Sussex: Profile of Domestic Abuse Provision*. Bristol: Women's Aid, p.4.

<sup>42</sup> Women's Aid, 2021a, pg.16.

<sup>43</sup> Council of Europe. (2008). *Combating Violence Against Women: Minimum Standards for Support Services*. Available at: [cover\\_en.cdr \(coe.int\)](https://www.coe.int/en/csr/cover_en.cdr(coe.int)). Strasbourg: Council of Europe, p.18.

**Table 5: Breakdown of current and target totals of refuge spaces across Sussex**

<b>Local authority area</b>	<b>Current total</b>	<b>CoE target based on local population</b>
East Sussex	47	56
West Sussex	24	86
Brighton & Hove	19	29
<b>Total</b>	<b>90</b>	<b>171</b>

- ▶ **Sussex local authorities should provide more domestic abuse accommodation spaces for women and their children, according to the Council of Europe’s minimum standards.**

A key finding of the needs assessment and engagement was the need for a **more diverse and appropriate range of safe accommodation and support options**. Stakeholders emphasised that traditional refuge is not always suitable for a wide variety of victims/survivors, including older people, those with care or support needs or pets, and people with multiple complex needs (MCN) as will be discussed in a following section.

Traditional refuge can be considered unsuitable for a variety of reasons:

- ❖ Shared facilities were frequently named as a reason that victims/survivors do not access or maintain their stay in refuge. For individuals with certain mental health conditions, such as Obsessive-Compulsive Disorder; cultural differences from other residents, for instance, Gypsy, Roma and Traveller (GRT) victims/survivors; transgender women, or those with teenage sons, shared facilities can be a major barrier to accessing or settling into refuge.
- ❖ The strict house rules, while important for safety reasons, can often be difficult for individuals to adjust to and victim/survivors told us the rules can often feel unfair. One specialist stakeholder shared an example in which the refuge required children to be supervised at all times and when the resident left her children briefly to use the bathroom, she was told off by refuge staff. These sorts of rules can act as barriers to victims/survivors maintaining their stay in refuge.
- ❖ Victim/survivors told us the rules can be challenging for those who may have just left the controlling environment of domestic abuse. This setting can also hinder independent living.
- ❖ An eviction or early departure from one refuge can mean that victim/survivor is then barred from other local refuges, reducing victims/survivors’ choices even more. However, such a departure is often due to a lack of specialist support within the refuge, such as substance misuse or culturally specific support, rather than that individual being a risk to other residents.<sup>44</sup>
- ❖ Refuge is often unaffordable for working victims/survivors, who do not have access to Housing Benefit to contribute to the costs of supported living.
- ❖ Provisions for larger families are limited. The largest number of refuge rooms have two beds (29 rooms, 32.6%). Only eight rooms in Sussex refuges have four beds and no rooms in Sussex have five or more beds.<sup>45</sup>

<sup>44</sup> Women’s Aid. (2021a), p.26.

<sup>45</sup> Women’s Aid, (2021a), p.24.





### Case study

The client self-referred via a domestic abuse helpline. An outreach worker visited the woman in West Sussex. She is a Gypsy woman with seven children. The client disclosed that she had previously experienced domestic abuse from a former partner and had recently experienced physical abuse from her current partner. She was scared and wanted to leave the privately rented property they shared.

The outreach worker spent a day contacting refuges across the country for the client and her children. No refuge across the United Kingdom could accommodate the client's seven children. The outreach worker continued to contact the client and to look for alternative forms of safe accommodation.

After a week, the client disengaged and contact with the service ended. The client left the private rented property. It was suspected that she was travelling with her partner and the children elsewhere in the country.

Another frequent finding was the lack of choice that victims/survivors are presented with when they access domestic abuse support. Survivor engagement found that either victims/survivors frequently did not know what their options were, or that refuge was their only option. Sussex refuge residents provided feedback that if their choices had been explained more clearly, they might have made different decisions. One woman shared that if she had known how long schools' waiting lists were, she would not have moved to Sussex. Feedback suggested that providing photos of available rooms would make the process more honest and accountable.

*"It is sink or swim - if you don't take what is offered to you, you don't get any help" - one resident interviewed at a Sussex refuge.*

By expanding the current offer of safe accommodation, Sussex should provide a more diverse and appropriate range of choices. With more options, individuals will feel more empowered as they are able to select the offer that best suits their needs.

Rather than considering different housing options in isolation, Sussex must adopt a Whole Housing Approach (WHA) when commissioning more diverse and appropriate options. A WHA is a "framework for addressing the housing and safety needs of victim/survivors"<sup>46</sup> and considers all the main housing tenure types and the pathways to maintaining or accessing safe accommodation. The expanded range of offers should include:

- ❖ **Dispersed, self-contained accommodation:** Such accommodation provides safe spaces to start recovery while living independently. These units must be fully furnished, accessible and varied in size to accommodate larger families and able to accept pets. This type of accommodation would also better meet the needs of various groups for which shared facilities would not be suitable or appropriate, including women with teenage sons. Support services will be linked up with these units, which should be spread across the county to ensure equality of provision, including around Crawley where there is currently a lack of domestic abuse safe accommodation.
- ❖ **Specialist safe accommodation:** The need for more specialist safe accommodation will be discussed in a following section. Specialist services should be accessible to male victims/survivors with and without children; LGBTQ+ victims/survivors; and

---

<sup>46</sup> [What is the Whole Housing Approach? - daha - Domestic Abuse Housing Alliance \(dahalliance.org.uk\)](http://dahalliance.org.uk)

victims/survivors from Black and minoritised ethnic groups, GRT communities, those with multiple, complex needs, and those with no recourse to public funds.

- ❖ **Short-term/respite accommodation:** East Sussex is currently developing a 12-month respite accommodation pilot with DLUHC funding, for women who are, or at risk of, rough sleeping. Such provision is limited elsewhere. Brighton & Hove and West Sussex will increase respite accommodation that can accommodate victims/survivors in need of short-term care and support, whether in crisis due to MCN or short-term gaps in housing.
- ❖ **Sanctuary Schemes:** Schemes which allow households to remain safely in their own homes will be discussed later in the Strategy but should be included in a broader menu of safe accommodation options. Sussex will continue to invest in and raise awareness of these schemes that can enhance an individual's physical and perceived safety in their own home.
- ❖ **Move-on accommodation:** Sussex will improve the offer of move-on options for when victims/survivors are ready to leave safe accommodation. Current options are limited, slowing down individuals' journeys into recovery and independence from services. By linking up refuge and other safe accommodation with appropriate move-on options, Sussex will ensure more cohesive accommodation offers.
- ❖ **Second-stage accommodation:** Such accommodation could be used for those who have already fled abuse and are in a place of relative safety, and as such would not require a room in a refuge, but still require support.
- ❖ **Better private rented sector (PRS) options:** PRS is the most common move-on option in Sussex. PRS options for those leaving safe accommodation will be high-quality, affordable and linked up with support services.
- ❖ **Appropriate and accredited accommodation options:** Registered social landlords will be encouraged to take a Domestic Abuse Housing Alliance (DAHA) Health Check and work toward DAHA accreditation to improve their response to their residents who are victims/survivors. All accommodation units will be appropriate and quality-assured by meeting Women's Aid,<sup>47</sup> Imkaan<sup>48</sup> or Male Domestic Abuse Network quality standards<sup>49</sup> and where relevant, the Government's National Statement of Expectations for Supported Housing.<sup>50</sup>
- ❖ **Flexible funding:** Sussex will develop a flexible fund to be utilised for one-off housing costs in emergency situations.
- ▶ **A broader menu of domestic abuse safe accommodation options, in line with a Whole Housing Approach, should be developed in Sussex. Consideration should be given to ensuring all new accommodation options are appropriate and quality assured.**

---

<sup>47</sup> Women's Aid. (2018). *National Quality Standards*. Available at: [National-Standards-2018.pdf \(netdna-ssl.com\)](#). Bristol: Women's Aid.

<sup>48</sup> Imkaan. (2014). *Summary: Imkaan Accredited Quality Standards*. Available at: [Commissioners Pack Single Parts.indd \(netdna-ssl.com\)](#).

<sup>49</sup> [Service Standards - Male Domestic Abuse Network \(mdan.org.uk\)](#)

<sup>50</sup> [Supported housing: national statement of expectations - GOV.UK \(www.gov.uk\)](#)

## Accessible and Inclusive

*Ensuring services are accessible to all victims/survivors and meet the specific needs of those with the full range of protected characteristics*

This Strategy is committed to ensuring that individuals with the full range of protected characteristics have equal access to safe accommodation support services, as outlined in the Equality Act 2010 and Public Sector Equality Duty.<sup>51</sup> The Duty requires public bodies to consider the needs of and impact on, all individuals when delivering policies and commissioning services. The Equality Act enables public bodies to deliver specific and dedicated services where these would meet the needs of different groups of victims/survivors, including single-sex services.<sup>52</sup>

Sussex Local Authorities recognise that individuals can have multiple protected characteristics, and these can intersect to form additional barriers to accessing support. Having safe accommodation services and staff that can respond to such intersecting issues is essential.

### ❖ Age

---

There were 117 children and young people (CYP) living in Sussex refuges during 2020-21. Only four refuges have dedicated CYP workers. East Sussex refuges are lacking this kind of specialist support.

---

Since children have now been recognised as victims of domestic abuse in their own right under the Domestic Abuse Act for the first time, local authorities are required under law to provide them with appropriate support. Current provision of dedicated workers for children and young people in safe accommodation is lacking in East Sussex. Introducing CYP support workers within existing refuges should be a priority; providing dedicated and personalised therapeutic, psychoeducational and emotional support for the duration of a child's stay in safe accommodation. As soon as a wider range of safe accommodation options is available, floating dedicated CYP support should also be included in the service offer to people accommodated in the additional units.

During interviews with survivors, refuge residents shared that there were not enough suitable provisions for children, including toys and garden equipment. Children at one refuge said that having a good Wi-Fi connection was an important feature for them.

- ▶ **Sussex local authorities should ensure that every available form of domestic abuse safe accommodation offers dedicated, personalised and holistic support for children and young people. All relevant safe accommodation options should be suitable and appropriate for children.**

---

<sup>51</sup> [Equality Act 2010 \(legislation.gov.uk\)](https://legislation.gov.uk)

<sup>52</sup> Government Equalities Office. (2011). *Equality Act 2010: Public Sector Equality Duty What Do I Need to Know? A Quick Start Guide for Public Sector Organisations*. Available at: [equality-duty.pdf \(publishing.service.gov.uk\)](https://publishing.service.gov.uk), p.9.

---

Victims/survivors aged 16-25 represented 19% of all Sussex Police domestic abuse incidents in 2020-2021.

---

Young adult victims/survivors (16-25) may face specific experiences of domestic abuse, including digital abuse and coercive control using technology.<sup>53</sup> Younger people are also less likely to understand their experiences as domestic abuse and may be less willing to seek support, than adult victims/survivors.<sup>54</sup> With some harmful practices, such as forced marriage and so-called honour-based violence more likely to take place at a younger age, service provision must respond to the specific cultural challenges faced by younger people from some BAME communities.<sup>55</sup> Specialist support for victims/survivors aged 16-25 would help Sussex better respond to a particularly vulnerable group of people.

- ▶ **Specialist safe accommodation and support for victims/survivors aged 16-25 should be established and be culturally appropriate for anyone fleeing forced marriage and so-called honour-based violence, including couples accommodation where needed.**

---

People aged over 65 represent 25% of the Sussex population, but only 6% of police domestic abuse incidents. In 2020-21, 260 people aged 65 and over were referred to Adult Social Care services across Sussex due to domestic abuse. Only 5 people aged over 65 were living in Sussex refuges in 2020-21.

---

A specialist service for older people advised that very few domestic abuse safe accommodation and support providers have specific policies for older people. Creating such policies would enable services to better understand the particular needs of older victims/survivors and any barriers they may face in seeking support.

Stakeholders told us that older people often do not see themselves as victims of domestic abuse, due to the longer-term experience of often decades of abuse and would not consider specialist domestic abuse services as suitable for them. Offers of support must therefore be more generic rather than framed as 'domestic abuse' and promoted in places older people are more likely to attend, including GP surgeries and befriending services. Service offers must also be longer-term for older people in order to combat the longer-term dynamics of abuse, although this may require contract variations in East Sussex and Brighton & Hove, where provision is currently commissioned for a maximum of six months. Domestic abuse support must be linked in with other services, including Adult Social Care and Health, due to the frequent overlap in older people's needs.

- ▶ **Offers of support should be tailored more directly to older people across Sussex, including more generic language, broader promotion of support, linking in with other support services and targeted training for front-line professionals who routinely come into contact with older people.**

---

<sup>53</sup> [Domestic abuse: draft statutory guidance framework - GOV.UK \(www.gov.uk\)](https://www.gov.uk/government/consultations/domestic-abuse-draft-statutory-guidance-framework)

<sup>54</sup> [Domestic abuse: draft statutory guidance framework - GOV.UK \(www.gov.uk\)](https://www.gov.uk/government/consultations/domestic-abuse-draft-statutory-guidance-framework)

<sup>55</sup> [Harmful traditional practices - Gender based violence - Health topics - Public Health Scotland](https://www.healthscotland.com/topics/harmful-traditional-practices-gender-based-violence)

## ❖ Gender identity and sexual orientation

---

In 2020-21, women represented 71% of police domestic abuse incidents, reflecting the gendered nature of domestic abuse. Men represented 29%. Non-binary and transgender people represented 0.02% and 0.11%, respectively. There is no specialist male safe accommodation in Sussex or the South East. Only safe accommodation providers in Brighton & Hove are currently able to accept referrals for transgender women – refuges in East and West Sussex currently cannot. From 1<sup>st</sup> November 2021, East Sussex refuge provider, Clarion Housing Group, will accept referrals from transgender women.

---

This Strategy acknowledges that gender identity and sexual orientation are separate characteristics and would be worth discussing in isolation. However, due to the frequent cross-over in support services for people in the LGBTQ+ community, these characteristics have been discussed together.

Women are the primary victim/survivors in cases of domestic abuse and are more likely to experience repeat victimisation.<sup>56</sup> Women have the greatest need for domestic abuse safe accommodation and support, a trend reflected in the needs assessment findings. Most services in Sussex are accessible for women and girls, but improvements to service provision can still be made. Existing safe accommodation providers must ensure that therapeutic, holistic and trauma-informed support is readily available for women, both individually and in groups. Any new safe accommodation services that are introduced in Sussex should also include specialist support offers.

Funding for current and future services for women and girls must be sustainable, long-term and independent from the funding for the other specialist services identified within this Strategy. The needs of women and girls must continue to be met alongside the needs of other groups for whom services are currently lacking.

► **All women in safe accommodation in Sussex should receive a minimum standard of care and support, to include keywork and move-on support.**

Research shows that male victims/survivors of domestic abuse are often under-represented in the data.<sup>57</sup> Stakeholders told us that male victims of domestic abuse do not often seek alternative accommodation and they often become homeless to escape abuse at home.<sup>58</sup> This may be due to the lack of specialist male safe accommodation locally and men not knowing where to seek support. Despite almost one third of police incidents involving male victims/survivors of domestic abuse in Sussex, there is no specialist male safe accommodation across the South East. To fill this regional gap, Sussex should explore options for specialist safe accommodation for male victims/survivors. Stakeholders told us that dispersed, self-contained units would be most appropriate, with an offer of floating support with support for children if required.

---

<sup>56</sup> [Delivery of support to victims of domestic abuse in domestic abuse safe accommodation services - GOV.UK \(www.gov.uk\)](https://www.gov.uk/government/news/delivery-of-support-to-victims-of-domestic-abuse-in-domestic-abuse-safe-accommodation-services)

<sup>57</sup> Mankind Initiative. (2021). *Making Invisible Men, Visible*. Available at: [Making-Invisible-Men-Visible-Guide-Final.pdf \(mankind.org.uk\)](https://mankind.org.uk/wp-content/uploads/2021/03/Making-Invisible-Men-Visible-Guide-Final.pdf), p.2.

<sup>58</sup> Mankind Initiative, p.3.

- ▶ **Sussex local authorities will explore options for the provision of specialist, dispersed and self-contained units of safe accommodation that can accommodate male victims/survivors of domestic abuse.**

---

In 2020-21, 74% of victims/survivors residing in safe accommodation in Sussex identified as heterosexual. 1% identified as gay/lesbian and 3% identified as bisexual. Data was unknown for 22%. One Sussex refuge has an LGBTQ+ specialist worker role. There is one LGBTQ+ specialist dispersed accommodation in Brighton & Hove. Funding has been secured to recruit additional LGBTQ+ IDVAs (Independent Domestic Violence Advisors) in West Sussex, Brighton & Hove and East Sussex.

---

Research has shown that LGBTQ+ individuals are historically under-represented in data and reporting, particularly around violence and abuse.<sup>59</sup> The low numbers of LGBTQ+ individuals within the needs assessment may also reflect this under-representation, and low figures do not mean that abuse is not happening. A recent LGBTQ+ Public Health survey conducted in East Sussex found that 4% of respondents have experienced bi/homo/transphobia in the home in the past 12 months – while this figure is also low, it represents a higher number than was captured in the needs assessment and indicates that more must be done to reach these groups.

There are four LGBTQ+ specialist accommodation units in Brighton & Hove, important given the large LGBTQ+ community in the city.<sup>60</sup> However, via this Strategy, more such specialist accommodation should be provided in East and West Sussex. Such accommodation units would benefit from being dispersed and self-contained, with an offer of floating support included. Dedicated support for children should be included if required.

Service provision for LGBTQ+ victims/survivors should also extend to increased awareness training for housing officers and other frontline practitioners, including intersectionality awareness. East and West Sussex will explore recruiting specialist LGBTQ+ support roles within existing safe accommodation and support services.

- ▶ **Sussex local authorities should increase specialist floating support and dispersed and self-contained units of safe accommodation that can accommodate LGBTQ+ victims/survivors and invest in LGBTQ+ awareness training for frontline practitioners.**

---

<sup>59</sup> Stonewall. (2018). *Supporting Trans Women in Domestic and Sexual Violence Services*. Available at: [stonewall\\_and\\_nfpsynergy\\_report.pdf](#). London: Stonewall, p.6.

<sup>60</sup> Brighton & Hove City Council. (2009). *LGBT (Lesbian Gay Bisexual and Trans) People's Housing Strategy*. Brighton. Available at: [Microsoft Word - LGBT Housing Strategy Final Draft Oct 2009 .doc \(brighton-hove.gov.uk\)](#).



### Case study

Following an incident in which the police attended, Mike (not real name) contacted support services. Despite being the victim and on a joint tenancy, Mike had been removed from the property and supported to make a homeless application immediately so had already been placed in emergency accommodation in another local authority area.

Unfortunately, Mike experienced significant homophobic abuse from other residents. This had a major impact on his mental health. Mike suffered from PTSD and night terrors exacerbated by the abuse and his current living situation. He also had mobility issues due to a knee injury. Mike was moved into safe emergency accommodation in his original local authority area. Mike was assigned a Homeless Prevention Officer who supported him to find private rented accommodation through the Direct Lets Scheme and began to view available properties. Unfortunately, despite looking, Mike was unable to secure accommodation in the time but was thankfully provided with long term temporary accommodation. Mike was pleased and felt safe being in his own place. He continued to receive support to find more permanent housing and was closed to the service.

### ❖ Disability

---

People with disabilities represented 10% of police domestic abuse incidents in 2020-21. Data for Disabled people living in Sussex safe accommodation was limited. Five Sussex safe accommodation facilities do not have wheelchair access or any other kind of disability support, including specialist equipment for Deaf people. Two of these units were in East Sussex, two were in West Sussex, and one was in Brighton & Hove.

---

The Equality Act defines disability as “a physical or mental impairment that has a ‘substantial’ and ‘long-term’ negative effect on one’s ability to do normal daily activities.”<sup>61</sup> “Substantial” is defined as “more than minor or trivial,” and “long-term” is defined as longer than 12 months.

The limited accessibility and disability support currently in Sussex refuges is a clear gap in service provision. Equipment for deaf victims/survivors is lacking in refuges and the whole housing system is often inaccessible for those with Special Education Needs (SEND) or Speech, Language and Communication Needs (SLCN). Sussex should consider adapting and extending service provision for disabled victims/survivors to reflect a range of additional needs. Introducing specialist teams with varied backgrounds to support staff, adapting existing units and sourcing more accessible accommodation would transform current and future offers and ensure that safe accommodation is accessible for everyone who needs it.

---

<sup>61</sup> [Definition of disability under the Equality Act 2010 - GOV.UK \(www.gov.uk\)](http://www.gov.uk)



### Case study

Stan (not real name) is a 45-year-old TNBI (Trans, non-binary, intersex) disabled person. They had an adapted council flat, which was solely in their name, and they lived there with their non-binary spouse, Jordan (not real name). Stan contacted the service as they had fled their property after 4 years of domestic abuse. Stan was currently staying with a friend in the local area but could only stay there for one more night. Stan had been in touch with a local housing authority, but they said they don't have a duty to help them. Later that day, Stan was offered an alternative accommodation place, but it was a ground floor flat out of area that hadn't been adapted. Stan was not offered any way of getting to the property or any way of collecting their possessions.

The following day, Stan was informed that Jordan had been hospitalised overnight after a visit from the crisis team. Stan was then able to return home and inform the hospital that Jordan could not be discharged there, Jordan was then supported to approach the council for emergency accommodation.

- ▶ **Support and accessibility for disabled victims/survivors in safe accommodation should be improved, by introducing multi-agency in-reach teams where needed, developing new facilities or adapting existing facilities, with measures such as installing ramps, increasing ground-floor and step-free units and installing visual fire alarms to assist deaf people.**
- ▶ **Housing application processes should be in-person and accessible for those with SEND or SLCN and include interpretation for a range of languages, including British Sign Language.**



## ❖ Race and Ethnicity

---

In 2020-21, 77.1% of victims/survivors in safe accommodation in Sussex identified as white; 9.1% identified as Black or Black British; 5.8% identified as Mixed or multiple ethnic groups; 5.1% identified as Asian or Asian British; 2.5% identified as "Other" and 0.4% identified as Gypsy, Roma and Traveller (GRT). There is no specialist safe accommodation for Black and minoritised women in Sussex, although there are community based services, including a specialist BME IDVA in Brighton & Hove and a new specialist service, Hersana, is being established in Sussex, based in Crawley. Six safe accommodation providers in Sussex can accept women with no recourse to public funds (NRPF) and four cannot (three in West Sussex, one in Brighton & Hove). 15% of national domestic abuse helpline calls to Friends, Families and Travellers (a national organisation advocating for GRT communities) come from Sussex.

---

Black and minoritised women can access community-based support and can access existing refuges should they need to do so. However, the lack of specialist and culturally-specific refuge is a gap in provision across Sussex. Such safe accommodation would ensure that victims/survivors receive the specific support they might need for their particular life experiences. Stakeholders suggested that this accommodation should be composed of dispersed units that can accommodate various cultural needs, including proximity to cultural centres or places of worship, with outside space more suitable for GRT families, which a specialist stakeholder advised would be more suitable. These accommodation offers should include wraparound specialist support with interpretation services if required.

- ▶ **Sussex local authorities will investigate specialist safe accommodation options for victims/survivors from marginalised ethnic groups, including Black and minoritised ethnic groups, Gypsy, Roma and Traveller communities and those with No Recourse to Public Funds.**



### Case study

The client was moved to a town 1.5 hours away from her friends and family, resulting in her feeling like she had been separated from her culture and the support system she had. She felt she could not eat her traditional foods or engage in cultural traditional practices with anyone. The client felt isolated and did not feel like the service providers understood her feelings or took her seriously.

Training on the specific needs of various ethnicities and marginalised groups, including how experiences can intersect, would enable staff to better understand the particular barriers certain communities might face. Specific immigration rights awareness training would allow frontline practitioners to feel more confident in seeking Destitution Domestic Violence Concessions and supporting particularly vulnerable victims/survivors.

- ▶ **Cultural awareness and immigration rights awareness training should be increased for frontline staff and commissioners to better understand the needs of various marginalised groups, including those with No Recourse to Public Funds and Gypsy, Roma and Traveller communities. Training packages must acknowledge the intersection of race, class and gender.**

## Responsive to Multiple Disadvantages

Establishing specialist provision to support victim/survivors with Multiple Complex Needs

A prominent theme throughout the stakeholder engagement was the current **lack of domestic abuse accommodation and support provision for women with Multiple Complex Needs (MCN)**.

Fulfilling Lives South East (FLSE), an organisation working with women with MCN across East Sussex and Brighton & Hove, stated that "MCN has a variety of meanings in services and third sector organisations, depending on the needs of the client group. In general, MCN includes people on the edges of society who are often excluded from or who cannot access mainstream services due to the complexity of their lives. For FLSE, MCN means a person who is experiencing 3 out of 4 of the following:"<sup>62</sup>



Through this Strategy, Sussex local authorities recognise the intersectionality between domestic abuse and MCN. FLSE reported that 93% of their clients have experienced domestic abuse.<sup>63</sup> Stakeholder and survivor feedback noted how in some cases victims/survivors with MCN may have to prioritise addressing other needs in order to be ready to receive support for domestic abuse.

With the COVID-19 pandemic increasing the use of digital and remote services, MCN specialists highlighted the accessibility issues faced by homeless and disadvantaged individuals in relation to housing and support assessments which are solely completed over the phone. In-person support and physical safe spaces are particularly important in ensuring accessibility for this cohort.

<sup>62</sup> Fulfilling Lives South East. (2021). *Reflecting on the Needs of Women with Multiple and Complex Needs who are at Risk of /or Experiencing Domestic Abuse, August 2021*, p.2-3.

<sup>63</sup> Fulfilling Lives South East, p.3.



### Case study

Alex (not her real name) is homeless and experiencing domestic violence. As the only route into specialist services, she was referred to the local commissioned domestic abuse service; a service that delivers support initially via the telephone to take forward referrals and assess support needs. However, the client was homeless and did not have a reliable phone or a private space to take a call and so she was unable to respond to the calls from the service, and the case was closed.

- ▶ **Sussex local authorities, specialist domestic abuse accommodation providers and support services should holistically support victims/survivors with MCN and ensure accessibility of services by providing both remote and in-person assessments and support.**

Women's Aid Annual Audit 2021 stated that there are only two refuges in England exclusively for women with substance use needs or complex needs, accounting for 13 bed spaces.<sup>64</sup> The following table illustrates which refuge services across Sussex consider referrals from women with named support needs.<sup>65</sup>

**Table 6: Referrals considered from women with named support needs in Sussex refuge provision**

Refuge service	Will consider referrals from women:				
	With mental health support needs	With drug use support needs	With alcohol use support needs	With previous refuge evictions	Who are ex-offenders
<b>Refuge - Eastbourne</b>	Yes	Yes	Yes	Yes	Yes
<b>Refuge - Hastings</b>	Yes	Yes	Yes	Yes	Yes
<b>Refuge - Lewes</b>	Yes	Yes	Yes	Yes	Yes
<b>Refuge - Rother</b>	Yes	Yes	Yes	Yes	Yes
<b>Refuge - Wealden</b>	Yes	Yes	Yes	Yes	Yes
<b>RISE - LGBT Service</b>	Yes	Yes	Yes	Yes	Yes
<b>Safe in Sussex – Amber House Community Refuge</b>	No	No	No	No	No
<b>Safe in Sussex - Chichester</b>	No	No	No	No	No
<b>Safe in Sussex - Worthing</b>	Yes	No	No	No	No
<b>Stonewater – Brighton Refuge</b>	Yes	Yes	Yes	Yes	Yes

<sup>64</sup> Women's Aid. (2021b). *The Domestic Abuse Report 2021: The Annual Audit, 2021*. Bristol: Women's Aid. Available at: <https://www.womensaid.org.uk/wp-content/uploads/2021/09/The-Domestic-Abuse-Report-2021-The-Annual-Audit-Revised-2021.pdf> Bristol: Women's Aid.

<sup>65</sup> Women's Aid, (2021a), p.27.

Although the above table suggests referrals for women with MCN are considered in several refuges across the county, the lack of provision for this cohort in West Sussex is evident. Additionally, Housing Option teams and outreach support services repeatedly expressed concerns over accessibility, even for those refuges alleging they consider referrals from victims/survivors with MCN.

The needs assessment showed that in 2020-21, of those **denied access to or deemed ineligible** for accommodation services across Sussex, an estimated **52% had mental health issues, 40% had alcohol misuse problems and 27% had drug misuse problems.**

Stakeholders reinforced how individuals with MCN present the highest vulnerability and risk, but also have the lowest possibility of gaining access to safe spaces and are often marginalised by services. Organisations that do not hold a statutory duty to do so, reported on multiple occasions having paid out of their own budgets for Bed & Breakfast accommodation to house survivors with MCN in the short-term, due to a lack of appropriate and accessible accommodation options. This is a prominent gap in the provision of domestic abuse accommodation and support in Sussex.

The needs assessment highlighted that mental health issues, as well as alcohol and drug misuse, were amongst the most common reasons for denying a space within or evicting someone from a refuge. Referrals may be declined due to the complexity of their needs, unsuitability of facilities and the lack of specialist support. Even where spaces are provided, they are often challenging for victims/survivors with MCN to maintain due to the mismatch between strict accommodation rules and their complex lifestyles.

Feedback from complex needs IDVAs and mental health professionals suggested that traditional refuge provision is not the most appropriate setting to support women with MCN. Shared facilities, strict rules and 9am to 5pm staffing can all be problematic factors for victim/survivors experiencing complex lifestyles. As women with MCN commonly have children removed from their care, the presence of families within refuges can also be highly re-traumatising. Feedback proposed that traditional refuges should be adapted to better accommodate victims/survivors with MCN. The following case study reinforces the difficulties faced by women with MCN within refuges, in addition to the lack of alternative options available to them.



#### Case study

Jude (not her real name) is female and has experienced significant childhood trauma and was moved around through the care system. As an adult Jude's life has been defined by domestic abuse, self-harm, and poly drug use. DA incidents have become increasingly severe recently – some were reported to the police and her case was heard at MARAC several times. Although Jude was allocated a place in refuge, she was quickly evicted following an argument with another resident despite there not being an investigation where Jude was able to share her account of events or reflect on ways to resolve the conflict with the fellow resident.

Jude had no option but to return to the local area either living where she experienced significant childhood trauma or staying with the alleged perpetrator, as she was not allowed to move to other refuges across the local area and did not have any other housing options available to her.

When victims/survivors with MCN are denied spaces in refuges, they are often placed in temporary or emergency accommodation. Stakeholders told us that these forms of accommodation are unsuitable for MCN due to being mixed gender, with shared facilities, strict tenancy agreements and little-to-no specialist support provided. If victims/survivors

are placed in these forms of accommodation, in-reach specialist teams, floating support and IDVAs should be in place to support them.

In order to meet the needs of individuals with MCN, accommodation should be flexible, longer-term, staffed 24/7, with limited shared facilities and specialist wraparound support for mental health, alcohol/substance misuse and offending. This form of accommodation would reduce evictions and consequently also reduce homelessness, disengagement with services and the risk of returning to perpetrators.

East Sussex County Council hosted a partnership round-table event in September 2021 inviting partners to discuss safe accommodation options for those who experience multiple disadvantages. This highlights that work around this need is already being explored in Sussex.

Concerns around limited and unsuitable 'move on' options for victims/survivors with MCN were also raised. FLSE highlighted the benefits of adopting a 'Housing First' model, paired with specialist domestic abuse wraparound support, in ensuring accommodation is appropriate to MCN and simultaneously provides a long-term housing solution.<sup>66</sup>

"Housing is seen as a human right by Housing First services. There are no conditions around 'housing readiness' before providing someone with a home; rather, secure housing is viewed as a stable platform from which other issues can be addressed."<sup>67</sup>

- ▶ **Accommodation and support options appropriate for the needs of domestic abuse victims/survivors with MCN will be explored, including short-term respite facilities, specialist housing, 'move on' pathways and in-reach/floating support.**

---

<sup>66</sup> Fulfilling Lives South East, p.5.

<sup>67</sup> [Housing First in England The Principles.pdf \(homeless.org.uk\)](https://www.homeless.org.uk/wp-content/uploads/2018/07/Housing-First-in-England-The-Principles.pdf)

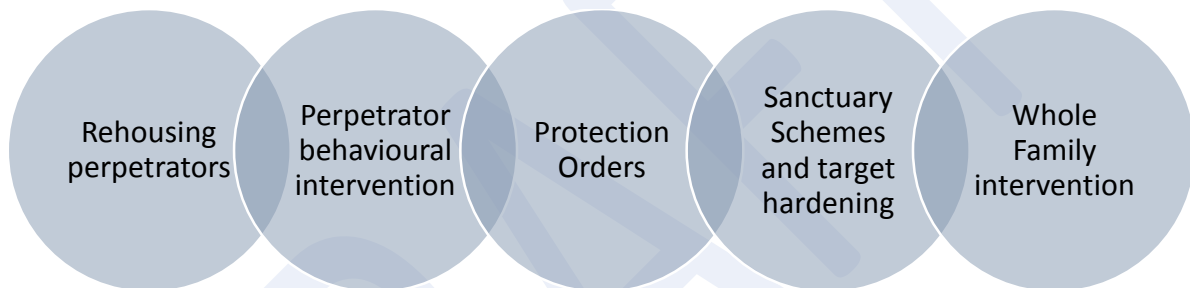
## Victim-centred

*Empowering victims/survivors to remain in their own homes through choices*

There is a common concern amongst stakeholders and survivors, that the current domestic abuse accommodation and support landscape in Sussex prevents victims/survivors from having independent decision making and relies on the expectation of them fleeing their home. Provision should better reflect complexity of domestic abuse victim/survivor and perpetrator dynamics, including recognition of the protective factors in relationships and the barriers and difficulties in leaving perpetrators, as well as the cycles of re-victimisation and re-offending.

*"Why should I move, give up my job, take my children away from family and friends, have no support network... Why should I be punished for what they have done to me?" – victim/survivor*

Feedback highlighted that the focus should shift from victims/survivors fleeing in order to seek alternative accommodation, to being effectively supported if they choose to remain in their own homes. With safety being the main priority, the following may only be appropriate for cases that are not high risk:



The above options minimise the impact on victims/survivors and increase perpetrator accountability, whilst ensuring safety planning is in place. They reduce the requirement to flee out of area and therefore do not affect employment, key services and existing social networks which facilitate support and recovery. Where the victim/survivor has children, these options would also provide stability in relation to their schooling. However, it is also important to consider the difficulty in situations where the distinction between victim and perpetrator is complicated.

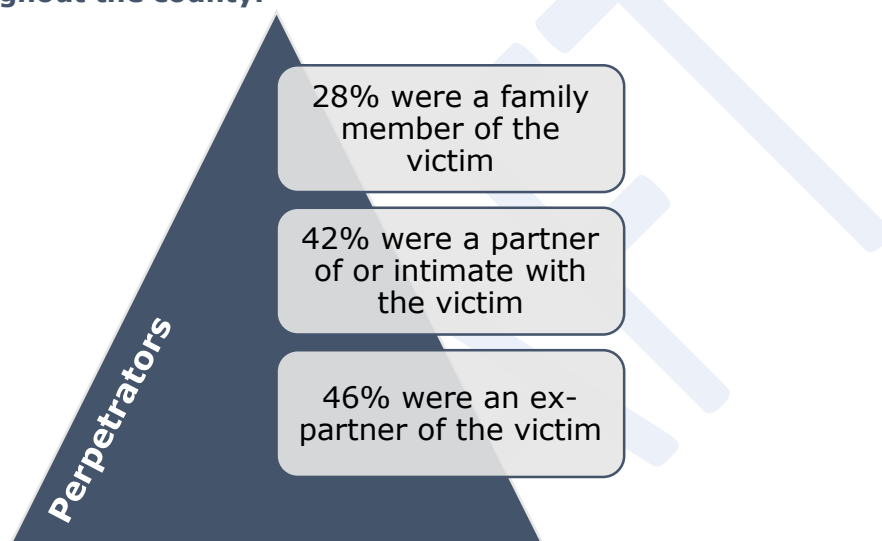
While they do not remove the need for emergency accommodation, as mentioned in earlier sections of this Strategy, Sanctuary Schemes are an alternative form of safe accommodation for cases which are medium or standard risk. Measures include the provision of safety locks, security lighting, panic alarms and CCTV. Police can also provide other options, although this is often short-term compared to provision from Sanctuary Schemes. This police provision is also currently only available to victims/survivors at high risk, even though Domestic Homicide Reviews (DHRs) and Serious Case Reviews (SCRs) highlight that medium risk cases are often likely to escalate to more serious harm and tragic outcomes.

Although data was not easily obtained from case files, feedback from Housing Options teams suggested that Sanctuary Schemes are an effective intervention when implemented as part of a wider safety and support package. For example, they can be used alongside Domestic Abuse Protection Orders (DAPOs) and Domestic Abuse Protection Notices (DAPNs), as introduced by the Domestic Abuse Act 2021, strict bail conditions, and IDVA support. Nevertheless, there was some lack of awareness regarding this option amongst wider partners, which suggested further promotion of Sanctuary Schemes might

be needed to improve accessibility. Some stakeholders also expressed confusion regarding which tenure types the scheme was available for.

There is inconsistency in the provision and promotion of Sanctuary Schemes across Sussex. The organisation Safe Partnership is commissioned by districts and boroughs to deliver Sanctuary Scheme measures across East Sussex. Brighton & Hove City Council and the majority of West Sussex County Council do not have formal Sanctuary Schemes in place. Brighton & Hove suggested a lack of awareness, and consequently uptake, led to the closure of the scheme. Other than Crawley Borough Council that has a Sanctuary Scheme in place through Crawley Homes the districts and boroughs in West Sussex independently provide target hardening measures on a case-by-case basis.

- ▶ **Victims/survivors should be able to remain in their home if they choose to, and it is safe to do so, by introducing measures such as Sanctuary Schemes throughout the county.**



Source: Sussex Police data

Although DLUHC Domestic Abuse Act New Burdens funding cannot be utilised for this purpose, stakeholders reinforced the importance of developing perpetrator initiatives. London Borough of Barking and Dagenham has adopted an approach which provides short-term housing for perpetrators, alongside an evidence-informed programme of behaviour change work.<sup>68</sup> While at face value somewhat contentious, enforcing loss of tenancy and rehousing perpetrators reduces risk of harm and enables victims to remain in their homes. The availability of housing for perpetrators of domestic abuse was identified as a key gap throughout Sussex. Combined with this, proactive work with perpetrators is fundamental in attempting to break the cycle of re-offending and improve outcomes for domestic abuse victims/survivors and their children. Sussex is already delivering interventions to perpetrators which could be promoted alongside greater perpetrator housing provision.

#### **Perpetrator programmes in Sussex**

- OSPCC and Sussex Police: High-Harm Domestic Abuse Perpetrator Programme
- Cranstoun: 'Men and Masculinities' 24 week rolling behavioural change

<sup>68</sup> [Barking and Dagenham Council – Giving victims and survivors control over where they live | Local Government Association](#)

- ▶ **Sussex local authorities will explore options for the re-housing of perpetrators and enforcement of loss of tenancies, alongside promoting domestic abuse perpetrator behavioural programmes.**

Whole Family intervention is a more dynamic approach to tackling domestic abuse which reflects the complexity of victim/survivor and perpetrator relationships. It engages every member of the household, working together with victims/survivors and perpetrators, as well as any affected children, to tackle domestic abuse alongside any other needs. The West Sussex Connect SafeLives pilot is a key example of this provision in Sussex. Stakeholder feedback highlighted the benefits of this type of intervention, suggesting the need for better promotion and investment in Sussex.

- ▶ **Whole Family intervention and support should be promoted and further invested in throughout Sussex.**

Where only an estimated 4% of domestic abuse results in a conviction, the availability of these alternative methods may increase confidence to report and improve outcomes for victims/survivors in feeling safe.

DRAFT



## Trauma-informed

*Embedding trauma-informed practice in services and processes through training and specialist knowledge*

The needs assessment and survivor and stakeholder engagement revealed that victims/survivors often described the process of seeking domestic abuse accommodation and support as re-traumatising. Victims/survivors highlighted that this was true for approaches to both housing authorities and support services, for the following reasons:



### Insufficient training



### Evidence requirements



### Re-traumatisation through repetition

Feedback found that housing officers often lack sufficient domestic abuse awareness training. Many cases of good practice were highlighted during the needs assessment - but without an in-depth domestic abuse training package - housing officers feel unsure of how best to respond to victims/survivors and therefore do not offer the right or appropriate service.

Engagement highlighted a clear need for a more trauma-informed approach to housing application procedures and training. Research shows that high numbers of people accessing public services have experienced trauma in their lives.<sup>69</sup> Trauma can have a significant impact on how individuals engage with services and is defined as resulting from:

"... an event, series of events, or set of circumstances that is experienced by an individual as physically or emotionally harmful or life threatening and that has lasting adverse effects on the individual's functioning and mental, physical, social, emotional or spiritual well-being."<sup>70</sup>

Understanding responses to trauma allows professionals and services to work more closely with the reality of that individual and form more trusting relationships. Trauma-informed practice is shown to be effective and beneficial for both survivors and staff and is shown to better reach those that are not accessing traditional services. Where basic domestic abuse awareness training is already available for frontline practitioners, training packages should be expanded to include a trauma-informed approach. Such training should include adequate supervision processes to account for vicarious trauma.

- **Consistent trauma-informed practice training should be developed for district and borough housing teams, housing associations and registered social landlords, expanding on existing training packages.**

Stakeholders told us that another re-traumatising element of the housing support application process is the requirement to provide evidence of domestic abuse. This obligation on housing authorities is explained below:

<sup>69</sup> Grandison, G. and Homes, A. (2021). *Trauma-Informed Practice: A Toolkit for Scotland*. Edinburgh: The Scottish Government. Available at: [Trauma-informed practice: toolkit - gov.scot \(www.gov.scot\)](https://www.gov.scot/resources/consultations-petitions/html/2021/01/Trauma-informed-practice-toolkit-gov.scot).

<sup>70</sup> Grandison and Homes, p.8.

"21.21 Housing authorities should seek to obtain an account of the applicant's experience to assess whether the behaviour they have experienced is abusive or whether they would be at risk of domestic abuse if they continued to occupy their accommodation."<sup>71</sup>

Stakeholders suggested that evidential requirements can deter victims/survivors from seeking support. In some cases, evidence may not be produced as readily, for instance, in cases of coercive control. Victims/survivors of lower-risk abuse may not yet have accessed support services and so may not have this body of information to share with housing teams.

Stakeholder engagement also revealed that the *kind* of evidence required can also be an obstacle. While the code specifies that:

*"Where an applicant's experience has been documented already by a domestic abuse service - where possible, housing authorities should utilise existing statements to avoid asking the victim to re-live their experience unnecessarily."*<sup>72</sup>

Local specialist domestic abuse services however suggested that this practice may not happen consistently within Sussex housing teams. Stakeholders shared that some housing authorities rely on police evidence rather than information from other services and victims/survivors themselves. This approach overlooks the reality of under-reporting to police and may deter many victims/survivors from seeking support, as they may not have accessed services or feel they have enough evidence. As discussed previously, housing IDVAs co-located within housing authorities would be able to complete DASH risk checklists with victims/survivors to meet evidence requirements and provide specialist support.<sup>73</sup>

*"Referring on to multiple agencies (whilst I understand its need) could be dealt with in a more delicate fashion as this would prevent the victim of having to repeat her story over and over which is traumatising in itself"* - public consultation respondent.

The above quotation highlights a common experience that was shared during engagement. The range of different services often used by victims/survivors, who may be dealing with other needs alongside domestic abuse, can be overwhelming. This feeling is likely to be increased when considering the impact of repeatedly sharing experiences of abuse and trauma. One refuge provider shared that staff develop documents with residents that can be shared with other services, to avoid the individual having to share their story more than once. This kind of approach can reduce the re-traumatisation often experienced by victims/survivors and should be adopted more widely. Similarly, adopting a single point of contact approach across the wider domestic abuse service network would reduce the burden on the victim/survivor. This Strategy acknowledges that victims/survivors have multiple journeys and entry points into services, so creating a single point of contact may be difficult. However, as much as possible, Sussex will adopt a holistic model of support in which victims/survivors do not need to repeat their stories.

One current initiative is a Victim Hub model for domestic abuse and sexual violence services in Sussex. Four hubs are in operation: Eastbourne, Hastings, Horsham and Brighton and includes police, statutory agencies and commissioned specialist services. This

---

<sup>71</sup> [Chapter 21: Domestic abuse - Homelessness code of guidance for local authorities - Guidance - GOV.UK \(www.gov.uk\)](#)

<sup>72</sup> [Chapter 21: Domestic abuse - Homelessness code of guidance for local authorities - Guidance - GOV.UK \(www.gov.uk\)](#)

<sup>73</sup> Domestic Abuse, Stalking and Harassment and 'Honour'-based violence Risk Indicator Checklist (DASH RIC)

model aims to streamline the victim/survivor's journey through different services, reduce duplication of work and ensure more co-ordinated working across the local authority areas.

- ▶ **Each local authority area will explore the potential of a single point of contact approach for victims/survivors accessing different services.**

Stakeholders suggested that the housing system can be difficult to navigate. Refuge staff reported feeling overwhelmed with the administrative burden of completing housing applications for residents. Co-locating housing specialists within safe accommodation would reduce the pressure on refuge staff and make expert housing advice more accessible for victims/survivors.

- ▶ **Sussex local authorities will consider providing dedicated housing specialists within domestic abuse safe accommodation services.**

DRAFT

## What Sussex local authorities will do next

Publish the draft Strategy for an eight week public consultation from 25 October 2021



Domestic Abuse Accommodation Subgroup to meet monthly to develop an action plan to address the identified needs in Sussex and implement provisions, which will include Key Performance Indicators (KPIs)



Commence commissioning activity to deliver additional safe and supported accommodation options for Sussex utilising the 2021-22 'new burdens' funding under s57(3) Domestic Abuse Act 2021



Incorporate the outcome of the government Spending Review's future funding decision into the Pan-Sussex Strategy and Delivery Plan



Quarterly needs assessment data to be submitted to the Accommodation Sub-Group as part of the s57(1)(c) Domestic Abuse Act 2021 monitoring process



DA Accommodation Sub-Group to submit an implementation progress report to the Domestic Abuse Local Partnership Board quarterly meeting as part of the s57(1)(c) Domestic Abuse Act 2021 monitoring process



Publish the final Pan-Sussex Strategy by 5 January 2022



Completion of an annual needs assessment refresher in conjunction with DLUCH reporting requirements under s59 Domestic Abuse Act 2021 (*apart from in 2022*)



Review and refresh the Pan-Sussex implementation Strategy and Delivery Plan every three years

## Closing statement

Although funding has currently only been allocated to local authorities for one year, the government has committed to longer-term funding for domestic abuse safe accommodation and support. Therefore, it is not envisaged that all the recommendations will be capable of being delivered or funded using the 2020-21 allocation alone.

This Strategy represents a commitment that Sussex Local Authorities will consider and cater for the needs identified when making commissioning decisions around support provisions. The six strategic priorities should be used to ensure that future funding is spent in an inclusive, meaningful and sustainable way.

We would like to thank the victims/survivors of domestic abuse that generously shared their experiences and stories throughout the needs assessment process. Their suggestions formed the centre of this Strategy and their voices must be heard in any future decision-making.

Thanks are also extended to the various local and national stakeholders and professionals whose views and recommendations were vital to this process. Sussex strives to be a safer place for everyone, where funding for essential services is long-term and sustainable, and everyone can get access to the support they need.

DRAFT

### **In an emergency, always call 999.**

For specialist domestic abuse support and advice, the following services can help:

#### **East Sussex**

- ❖ **Change, Grow, Live Domestic Abuse Service:** Domestic abuse support service. Contact: 0300 323 9985 - [Domestic Abuse Service - East Sussex | Change Grow Live](#)
- ❖ **Clarion Housing Group:** Domestic abuse refuge service, from 1<sup>st</sup> November 2021. Contact: 0300 500 8000 - [Domestic abuse or violence | Clarion \(myclarionhousing.com\)](#)

#### **West Sussex**

- ❖ **WORTH Services:** Domestic abuse support service. Contact: 07834968539 or 033 022 28181 - [Local support for people being abused - West Sussex County Council](#)
- ❖ **Safe in Sussex:** Domestic abuse refuge service. Contact: 0330 333 7416 - [Home - Safe In Sussex](#)

#### **Brighton & Hove**

- ❖ **Victim Support Domestic Abuse Specialist Service:** Domestic abuse support service. Contact: 0300 323 9985 - [Brighton and Hove Domestic Abuse Specialist Service - Victim Support](#)
- ❖ **Stonewater:** Domestic abuse refuge service. Contact: 01293 780419 - [Stonewater is a leading social housing provider.](#)
- ❖ **RISE:** Domestic abuse support service. Contact: 01273 622 822 - [Freedom from domestic abuse | RISE \(riseuk.org.uk\)](#)
- ❖ **LGBT Switchboard:** Specialist LGBT domestic abuse service. Contact: 01273 359042 - [Brighton & Hove LGBT Switchboard.](#)

#### **Pan-Sussex**

- ❖ **Hersana:** Specialist Black domestic abuse service. Contact: 07376 293 487 - [Support For Black Survivors Of Abuse | HERSANA. | England](#)
- ❖ **Opoka:** Specialist Polish domestic abuse service. Contact: 0300 365 1700 - [Opoka](#)
- ❖ **Friends, Families and Travellers:** Specialist support service for Gypsy, Roma and Traveller Communities. Contact: 01273 234 777 - [Friends, Families and Travellers \(gypsy-traveller.org\)](#)

### Appendix 1: The Domestic Abuse Act 2021<sup>74</sup>

The act will:

- create the first statutory definition of domestic abuse, emphasising that domestic abuse is not just physical violence, but can also be emotional, controlling or coercive, and economic abuse
- establish in law the office of Domestic Abuse Commissioner and set out the Commissioner's functions and powers
- provide for a new Domestic Abuse Protection Notice and Domestic Abuse Protection Order
- **place a duty on local authorities in England to provide accommodation based support to victims of domestic abuse and their children in refuges and other safe accommodation**
- prohibit perpetrators of abuse from cross-examining their victims in person in the civil and family courts in England and Wales
- create a statutory presumption that victims of domestic abuse are eligible for special measures in the criminal, civil and family courts
- clarify the circumstances in which a court may make a barring order under section 91(14) of the Children Act 1989 to prevent family proceedings that can further traumatise victims
- extend the controlling or coercive behaviour offence to cover post-separation abuse.
- extend the offence of disclosing private sexual photographs and films with intent to cause distress (known as the "revenge porn" offence) to cover threats to disclose such material
- create a new offence of non-fatal strangulation or suffocation of another person.
- clarify by restating in statute law the general proposition that a person may not consent to the infliction of serious harm and, by extension, is unable to consent to their own death
- extend the extra-territorial jurisdiction of the criminal courts in England and Wales, Scotland and Northern Ireland to further violent and sexual offences
- provide for a statutory domestic abuse perpetrator strategy
- enable domestic abuse offenders to be subject to polygraph testing as a condition of their licence following their release from custody
- place the guidance supporting the Domestic Violence Disclosure Scheme ("Clare's law") on a statutory footing.
- **Provide that all eligible homeless victims of domestic abuse automatically have 'priority need' for homelessness assistance**
- **ensure that where a local authority, for reasons connected with domestic abuse, grants a new secure tenancy to a social tenant who had or has a secure lifetime or assured tenancy (other than an assured shorthold tenancy) this must be a secure lifetime tenancy**
- prohibit GPs and other health professionals in general practice from charging a victim of domestic abuse for a letter to support an application for legal aid
- provide for a statutory code of practice relating to the processing of domestic abuse data for immigration purposes.

---

<sup>74</sup> [Domestic Abuse Act 2021: overarching factsheet - GOV.UK \(www.gov.uk\)](https://www.gov.uk/government/uploads/system/uploads/attachment_data/file/97222/domestic_abuse_act_2021_overarching_factsheet.pdf)

## **Appendix 2: Domestic Abuse Act: Local Partnership Board**

### Strategic objectives:

- To improve delivery across all agencies involved in supporting victims, survivors, and witnesses of domestic abuse so that they experience high quality services and are able to cope and recover from the impact of what has happened to them.
- To implement the new Section 58 duty in the Domestic Abuse Act, for local authorities and partners to establish a Domestic Abuse Local Partnership Board for the purposes of providing advice to the Sussex authorities about the exercise of their functions under section 57 of the legislation.

### Role:

- Take a multi-agency approach to delivering improvements for victims, survivors, and witnesses of domestic abuse as they enter, travel through and exit services in Sussex. All agencies play a crucial role in ensuring the 'victim and survivor voice' is at the centre of service delivery.
- Have strategic oversight and ultimate accountability for the delivery of actions that flow from the Sussex needs assessment to support commissioning of safe accommodation for those affected by domestic abuse, the Strategic Framework for Domestic and Sexual Violence and Abuse, community engagement work and the Equality Impact Assessments that accompanied the recommissioning of specialist services during 2019 and 2020.
- Ensure learning and practice recommendations from Domestic Homicide Reviews, and any other learning reviews in which domestic and sexual violence are a factor, are shared across Sussex.
- Include a focus on ensuring that people do not fall between the gaps in systems; collectively identifying pressure points and working collaboratively to ensure the system responds efficiently and proactively with a view to influencing structure and broader system responses to domestic and sexual violence and abuse.

### Membership of the group

- Tier One local authorities (West Sussex County Council, East Sussex County Council and Brighton & Hove City Council)
- Sussex Police
- The Office of the Sussex Police and Crime Commissioner
- Her Majesty's Prison and Probation Service
- Crown Prosecution Service
- Her Majesty's Courts and Tribunals Service
- Citizens Advice - Witness Service
- IDVA Services in West Sussex, East Sussex and Brighton & Hove
- Specialist providers of accommodation-based services for victim/survivors of domestic violence and abuse in West Sussex, East Sussex, and Brighton & Hove
- At least one person to represent the interests of persons who provide, or have functions relating to, health care services in its area
- At least one person to represent the interests of victim/survivors of domestic abuse
- At least one person to represent the interests of children of domestic abuse victims/survivors
- At least one person to represent the interests of Tier Two local authorities in West Sussex
- At least one person to represent the interests of Tier Two local authorities in East Sussex
- Other partners invited specifically as appropriate by agreement with the Chair



### Appendix 3: Data sources and stakeholder engagement meetings

Type	Source	Data
Quantitative	Sussex Police Corporate Development Department	Domestic Abuse (DA) crime statistics including incidents, homicides, and victims' demographics
	Sussex Police Citizen Focus Team	DA victim satisfaction survey results
	Office for National Statistics (ONS)	National and Local DA statistics
	Homelessness Case Level Information Classification (H-Clic)	DA Homelessness statistics
	OSPCC Commissioned Services monitoring data	Service outputs and victim/survivor outcomes
	MARAC	Referral numbers and demographics
	Specialist Service Providers	Service user statistics
	Local Authority District and Borough Housing Option Teams	Approaches and DA accommodation referral statistics
	Social Care (Adult and Child)	DA flagged case numbers and demographics
	Healthcare Providers	DA flagged case numbers and demographics
	Women's Aid	Purchased report outlining current service provision
Qualitative	Stakeholder engagement (see <i>below for full list of meetings</i> )	Observations around gaps, barriers, and solutions
	Fulfilling Lives	Lived experience report
	Public survey hosted on OSPCC website	Lived experience feedback
	Focus group questions to existing support groups	Lived experience feedback
Site visits	Emerging Futures, Worthing, West Sussex	Tour of facilities and focus group with residents
	Refuge, Brighton & Hove	Tour of facilities and focus group with residents
	Amber House, Littlehampton, West Sussex	Tour of facilities and focus group with residents

	Organisation
<b>1</b>	Adur and Worthing District Councils Housing
<b>2</b>	Age UK East Sussex
<b>3</b>	Arun District Council Housing
<b>4</b>	Brighton & Hove City Council Adult Social Care
<b>5</b>	Brighton & Hove City Council Children's Social Care

<b>6</b>	Brighton & Hove City Council Housing Options
<b>7</b>	Brighton Housing Trust
<b>8</b>	Brighton Women's Centre
<b>9</b>	CAPA First Response
<b>10</b>	Change, Grow, Live East Sussex Domestic Abuse Service
<b>11</b>	Change, Grow, Live East Sussex Domestic Abuse Service HIDVA
<b>12</b>	Chichester District Council Housing
<b>13</b>	Domestic Abuse Housing Alliance
<b>14</b>	East Sussex Adult Social Care Mental Health Team
<b>15</b>	East Sussex County Council Children's Social Care
<b>16</b>	East Sussex County Council SWIFT
<b>17</b>	East Sussex Housing Officers Group
<b>18</b>	East Sussex Refuge
<b>19</b>	Eastbourne Borough Council
<b>20</b>	Emerging Futures – <i>engagement meeting and site visit</i>
<b>21</b>	Empowering Communities with Integrated Network Systems (ECINS)
<b>22</b>	Friends, Families and Travellers
<b>23</b>	Fulfilling Lives
<b>24</b>	Hastings Borough Council Housing
<b>25</b>	Hastings Borough Council, Supported Accommodation & Refuges Virtual Team
<b>26</b>	Hersana CIC
<b>27</b>	Home Start East Sussex
<b>28</b>	Home Works
<b>29</b>	Horsham District Council Housing
<b>30</b>	Hourglass
<b>31</b>	Imkaan
<b>32</b>	Just Life Brighton
<b>33</b>	Lewes District Council
<b>34</b>	LGBT Switchboard
<b>35</b>	Mankind
<b>36</b>	Mankind Initiative
<b>37</b>	My Sisters' House
<b>38</b>	Oasis
<b>39</b>	Opoka
<b>40</b>	Optivo
<b>41</b>	Ottaway Strategic Management Limited
<b>42</b>	Paws Protect
<b>43</b>	Queen Victoria Hospital NHS Foundation Trust
<b>44</b>	RISE
<b>45</b>	Rise Up
<b>46</b>	Rother District Council Housing
<b>47</b>	Safe Haven Sussex

<b>48</b>	Safe in Sussex
<b>49</b>	Safe in Sussex male IDVA
<b>50</b>	Sign Health, Domestic Abuse Service
<b>51</b>	Southdown Housing
<b>52</b>	Southdown Housing, Homelessness Prevention and Mental Health Support
<b>53</b>	Standing Together
<b>54</b>	Stonepillow
<b>55</b>	Stonewater
<b>56</b>	Survivors' Network
<b>57</b>	Sussex Clinical Commissioning Group
<b>58</b>	Sussex Partnership Foundation Trust
<b>59</b>	Sussex Police
<b>60</b>	The Believe Foundation / Believe Globally CIC
<b>61</b>	The Clock Tower Sanctuary
<b>62</b>	The Links Project
<b>63</b>	The Probation Service
<b>64</b>	The Rita Project
<b>65</b>	The You Trust
<b>66</b>	Turning Tides
<b>67</b>	University Hospitals Sussex NHS Foundation Trust
<b>68</b>	Veritas Justice
<b>69</b>	Victim Support
<b>70</b>	Victim Support Criminal Justice IDVA
<b>71</b>	Victim Support LGBTQ+ Specialist
<b>72</b>	West Sussex County Council Adult Social Care
<b>73</b>	West Sussex County Council, Head of Strategic Housing
<b>74</b>	West Sussex MIND
<b>75</b>	WORTH and MARAC Lead, West Sussex
<b>76</b>	WORTH Family Support Leads and IDVAS
<b>77</b>	Yada

#### Appendix 4: Wider VAWG partnership work

- **Safer Streets 3** - two recent successful bids by the PCC for the government's Safer Streets funding for tackling VAWG, will bring nearly £1 million into Sussex.<sup>75</sup> The funding will be spent on training, public awareness campaigns and physical safety measures, in conjunction with Sussex Police and the three Tier One local authorities, to make streets safer for women and girls in Sussex.
- **STAR** - Sussex have also recently been successful in securing £45,000 funding from the Police Science, Technology, Analysis and Research (STAR) Board to create an innovative safety app, designed to help people find safe spaces in emergencies and report directly to Sussex Police. This app will be free for use, but it aims to particularly help women and girls.<sup>76</sup>
- **Night Time Economy** - The PCC, in consultation with local specialist services, Sussex Police and Tier One local authorities, applied for the government's Safety of Women at Night fund. If successful, Sussex will be awarded up to £300,000 to promote the safety of women and girls at night and as part of the night-time economy.<sup>77</sup>
- **Changing Futures** - Vulnerable people across Sussex are set to benefit from the support they receive to rebuild their lives after the three Sussex councils were awarded £4.425m from the Changing Futures initiative. The joint bid was one of 15 chosen for funding, out of nearly 100 submissions across England. The funding will be used to help change and improve the ways vulnerable people access essential support and treatment to prevent them from crisis when they may be facing homelessness, substance misuse, poor mental health, domestic abuse or contact with the criminal justice system.

---

<sup>75</sup> [SPCC - PCC welcomes Safer Streets funding \(sussex-pcc.gov.uk\)](https://www.sussex-pcc.gov.uk/news/sussex-pcc-welcomes-safer-streets-funding)

<sup>76</sup> [SPCC - PCC secures funding for innovative new safe space app \(sussex-pcc.gov.uk\)](https://www.sussex-pcc.gov.uk/news/sussex-pcc-secures-funding-for-innovative-new-safe-space-app)

<sup>77</sup> [Safety of Women at Night Fund - guidance to bidders \(publishing.service.gov.uk\)](https://publishing.service.gov.uk/guidance/safety-of-women-at-night-fund)

## Appendix 5: Service provision in Sussex

### ❖ Service mapping

The provision of domestic abuse accommodation and support has been identified via consultation with stakeholders and the Safe Space Sussex service directory.<sup>78</sup> Service mapping was completed in conjunction with Women's Aid, who hold the largest national data set on domestic abuse.<sup>79</sup> The below service list highlights the current provision of domestic abuse support services, domestic abuse safe accommodation and other forms of supported accommodation and support.

1. Amber House, Littlehampton: Public refuge run by Safe in Sussex. Five units, two of which can support single women.
2. Brighton & Hove LGBTQ Switchboard: Specialist service to support LGBTQ+ people in the city and link them up with other relevant services.
3. Brighton Housing Trust (Threshold): Provides a range of services to support the homeless, insecurely housed, and vulnerable men and women. The Threshold counselling service for women provides support around mental health issues and sexual/domestic abuse.
4. Brighton Women's Centre: provides services including drop-in sessions, Toybox crèche, foodbank, holistic therapies and self-improvement courses. BWC provide support for women involved with multiple complex needs and the Criminal Justice System through their Inspire Project.
5. Butterflies Child & Adolescent Counselling Service C.I.C: Provides individual counselling, anger management groups, equine assisted therapy, and equine assisted learning.
6. Change, Grow, Live (CGL): provides a domestic abuse specialist support service across East Sussex, as well as substance misuse support treatment Pan-Sussex.
7. Emerging Futures: 20 dedicated female units of accommodation in Worthing. Provision extends and provides direct support to females impacted by DA.
8. Friends Families and Travellers: Support service working with Gypsy, Roma and Traveller communities. They provide advice and consultancy, promote health and wellbeing, work on research and policy, deliver training and much more, for issues including domestic abuse.
9. Hersana CIC: Specialist 'by and for' organisation for Black survivors of domestic abuse and sexual violence. Hersana works across the UK but is setting up a Sussex service based in Crawley.
10. Home-Start East Sussex: Runs the Lotus programme, 6 weeks of educational and therapeutic sessions for women living in East Sussex or Brighton & Hove whose lives have been impacted by domestic abuse, but who are now safe.
11. Hourglass: Based in East Sussex, Hourglass is a UK-wide charity focusing exclusively on the issue of elder abuse and providing both emotional and practical support.
12. Just Life Brighton: Housing and wellbeing support for people in temporary accommodation. Works in Brighton and in Manchester.
13. My Sisters' House Women's Centre: Provides domestic abuse drop-in clinics, one-to-one sessions and casework, and group work, working across the coastal community of West Sussex.
14. Oasis Project: substance misuse and sex worker outreach project based in Brighton & Hove, also working in Hastings.

---

<sup>78</sup> [Safe Space Sussex \(safespacesussex.org.uk\)](https://safespacesussex.org.uk)

<sup>79</sup> Women's Aid, (2021a)

15. Opoka: Specialist DV Service for Polish Women, providing a helpline, crisis support, advocacy and outreach support.
16. Paws Protect - Cats Protection: Free and confidential fostering service, where cats are cared for until owners have escaped their abusive relationship and resettled somewhere safe.
17. RISE: Based in Brighton and operates in Brighton & Hove, providing information, support, advocacy and education around domestic abuse.
18. Safe Haven Sussex: A mix of shared and self-contained supported accommodation in Brighton. 60 medium support mental health accommodation places and 20 high support places.
19. Southdown Housing: not-for-profit specialist providers of care, support and housing services for vulnerable people working across Sussex, based in Lewes.
20. Stonepillow: Homeless charity and accommodation provider, working in Chichester and Bognor Regis.
21. The Clock Tower Sanctuary: Homelessness support and advice centre for young people aged 16-25 based in Brighton.
22. The Daisy Chain Project: Domestic abuse legal advice charity, providing pro bono legal advice, educating people about what constitutes domestic abuse. Based in Worthing but has a national reach.
23. The Rita Project: Based in Brighton & Hove, working in the city and in rural East Sussex, The Rita Project raises awareness and supports those experiencing domestic abuse. They run projects in schools and rural communities and with homeless people.
24. The YOU Trust: Delivering West Sussex Connect Service, which aims to fill identified gaps in service provision, helping to provide a 'one front door' access to domestic abuse support.
25. Veritas Justice: expert stalking advocacy and support service based in Brighton & Hove and working across Sussex.
26. Victim Support Brighton & Hove Domestic Abuse Support Service: Providing IDVA casework support, an IDVA based at the Royal Sussex County Hospital and a criminal justice DVA to support through the criminal justice system.
27. WORTH Domestic Abuse Services: Teams of IDVAs working across West Sussex who work to identify, assess, and assist people at risk.

#### **Safe accommodation:**

1. Safe in Sussex: Based in Worthing, operates four refuges along the south coast of West Sussex: two are commissioned, two are funded independently.
2. Refuge: Five refuges in East Sussex: one in each of the five district and borough geographical areas, with 47 units in total. The contract will be provided by Clarion Housing Association from 1<sup>st</sup> November 2021.
3. RISE: Four units of specialist LGBTQ+ dispersed accommodation which can support three residents.
4. The Brighton Refuge - Stonewater: 15 units of self-contained accommodation and support for women and their children.

#### **National helplines used in Sussex:**

1. Karma Nirvana
2. National Domestic Abuse Helpline
3. National LGBT Domestic Violence Helpline
4. Mankind Initiative
5. Opoka National Helpline (Polish speaking)
6. Women's Aid Live Chat
7. The No Woman Turned Away Project

8. The Salvation Army Modern Slavery Adult Victim Care Service
9. Casework Service (Japanese speaking)
10. Respect Men's Advice Line (for male victims/survivors)
11. Respect Phonenumber (for perpetrators)

DRAFT





## Appendix 2.

Service Provision	Inconsistency/Gap	Local Authority Area
Refuge	Refuge considering referrals from survivors with Multiple Complex Needs	West Sussex
	Refuge with disability support, including wheelchair access and equipment for Deaf survivors	Pan-Sussex
	Refuge considering referrals from survivors with No Recourse to Public Funds	West Sussex
	Refuge considering referrals from transgender survivors	East and West Sussex
	Refuge accommodating larger families	Pan-Sussex
Specialist accommodation	LGBTQ+ specialist accommodation	East and West Sussex
	Male domestic abuse specialist accommodation	Pan-Sussex
	Specialist accommodation for survivors with Multiple Complex Needs	Pan-Sussex
	Specialist accommodation for survivors from minoritised ethnic groups	Pan-Sussex
Other accommodation options	Dispersed/Self-contained accommodation	Pan-Sussex
	Sanctuary Scheme	Brighton & Hove
	Short-term respite accommodation	West Sussex and Brighton & Hove
	Appropriate move on accommodation	Pan-Sussex
	Perpetrator accommodation	Pan-Sussex
Support	Floating support	Pan-Sussex
	CYP specialist worker	East Sussex
	Whole family intervention	East Sussex and Brighton & Hove
	Availability of in-person assessments for housing and support services	Pan-Sussex
	Availability of interpreters and BSL easily available for housing and support services	Pan-Sussex
Training	Trauma-informed approach training	Pan-Sussex
	Awareness training on marginalised groups, including No Recourse to Public Funds	Pan-Sussex

